



# NORIKO™

2016/2017 COLLECTION

# NORIKO™

2016/2017 COLLECTION

Not all heads are created equal.  
That's why this collection features  
a variety of new choices – from a  
larger cap size, to a versatile unisex  
style, to partial monofilament caps.

## EMERSON UNISEX

Emerson Unisex can be tousled for a  
rugged masculine look or styled into  
a soft, feminine silhouette.

## SKY LARGE CAP

A long time favorite, Sky is now  
available in a larger cap to fit both  
ladies and gents.

Styles shown from left to right: Angelica PM in Ginger Brown,  
Reese PM in Spring Honey, Emerson in Blueberry Burst, Sky  
Large Cap in Kahlua Blast, Emerson in Illumina-R.

YOUR STYLE...  
YOUR OWN WAY!







## ANGELICA PM AND REESE PM

These 2 popular styles are now available in our PM Collection which combines the natural appearance of a mono-top with all the ready to wear benefits of machine wefting. The end result is effortless, seamless and extremely comfortable.

Elastic band allows cap to stretch for more flexibility

Flower net top

Partial Mono



Soft flower net nape and ear tabs with adjustable band that contours to the shape of the head



Every single hair is individually hand knotted into a monofilament cap allowing each strand of hair to move freely for multi-directional styling





## NEW UNISEX

EMERSON

1698  
P. 8-9



# TABLE OF CONTENTS

AVAILABLE COLORS .....	6-7
NEW STYLES .....	8-15
MONOFILAMENT WIGS.....	16-29
PARTIAL MONOFILAMENT WIGS.....	25-30
MACHINE-MADE WIGS .....	31-59
HAIR ENHANCEMENTS.....	60-61
ACCESSORIES.....	62
WET PRODUCTS .....	63



NEW

SKY LARGE CAP

1699  
P. 10-11



NEW

ANGELICA PM

1696  
P. 12-13



NEW

REESE PM

1697  
P. 14-15





GEORGIA 1681



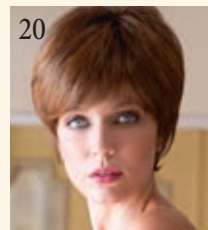
JESSIE 1670



JOLIE 1662



KENZIE 1684



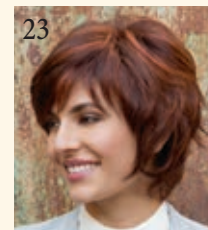
MADISON 1651



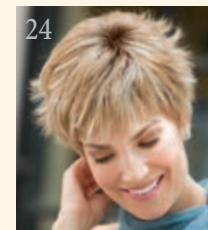
RYAN 1653



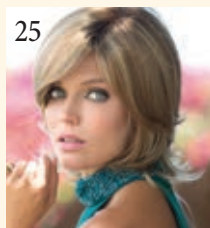
SHILO 1654



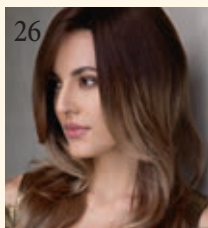
STACIE 1652



TIA 1650



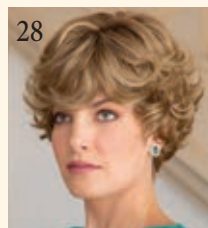
CLAIRE PM 1695



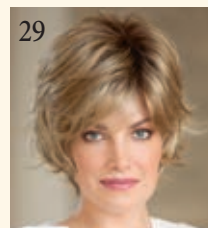
JANELLE PM 1692



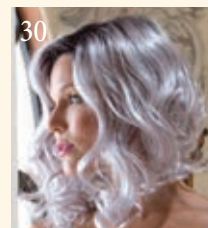
JAX PM 1690



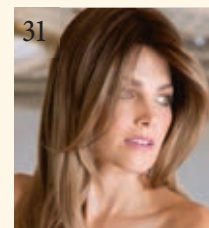
LULU PM 1691



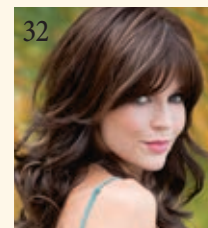
SKY PM 1694



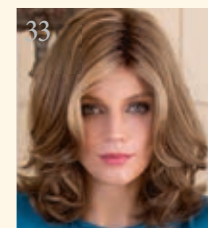
TESSA PM 1693



ANGELICA 1625



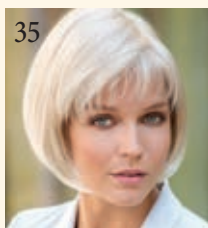
AVERY 1677



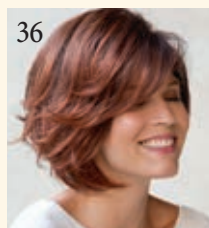
CARRIE 1674



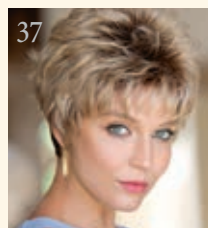
CLAIRE 1647



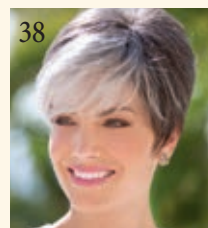
CORY 1633



DOLCE 1686



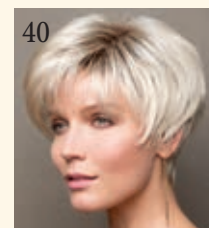
DREW 1631



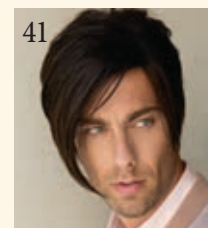
EVA 1672



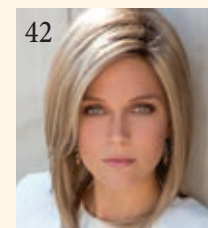
HAILEY 1680



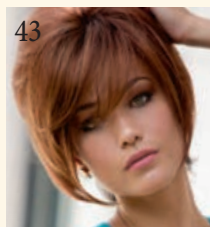
IVY 1679



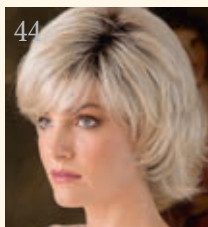
IZZIE 1688



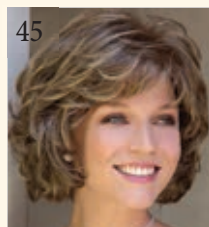
JACKSON 1669



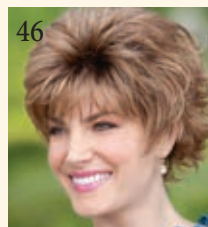
KATE 1668



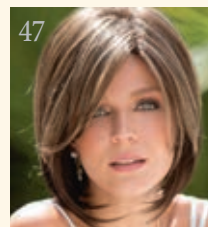
LEXY 1642



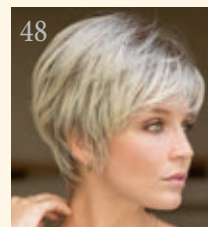
MARIAH 1613



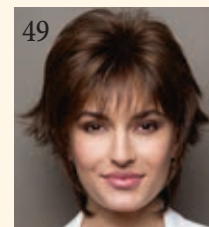
MASON 1632



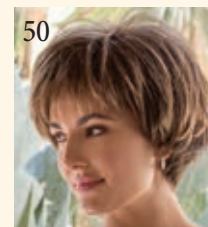
MAY 1673



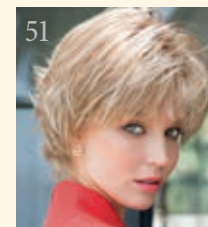
MEGAN 1607



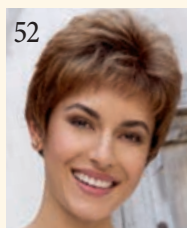
MILLIE 1655



MORGAN 1675



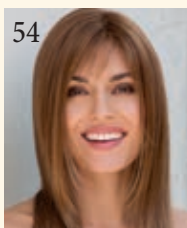
NORI 1682



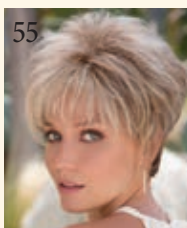
PAM 1606



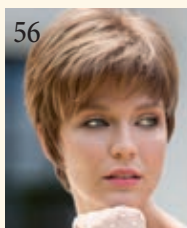
REESE 1660



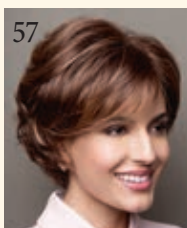
ROBIN 1639



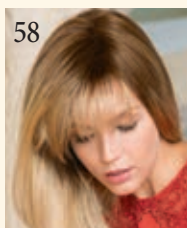
RONI 1641



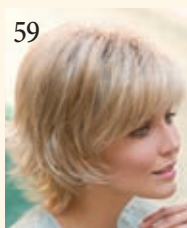
SALLY 1616



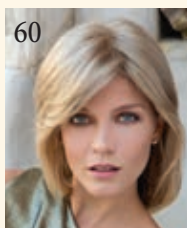
SANDIE 1648



SEVILLE 1685



SKY 1649



BERLIN 1665



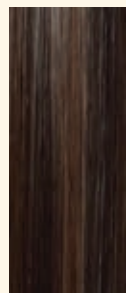
MILAN 1658



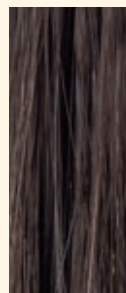


INSPIRED by the resplendence of nature and skillfully crafted by world class artisans, René of Paris proudly offers new designs and Hybrant Root™ colors to this award winning collection. This vibrant exploration of color chemistry pairs softly shadowed roots with Hybrant Shades fibers to create the ultimate wig experience just for you.

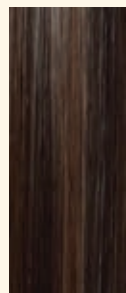
## BRUNETTES



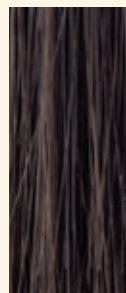
Expresso



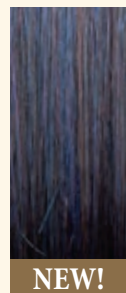
Cappucino



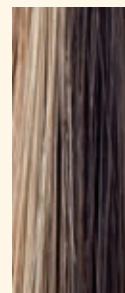
Chocolate Lava



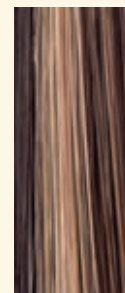
Dark Chocolate



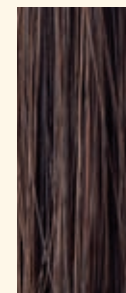
Blueberry Burst



Chocolate Swirl



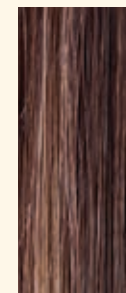
Java Frost



Ginger Brown

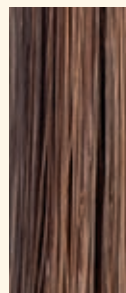


Kahlua Blast



Marble Brown

## HYBRANT BRUNETTES



Toasted Brown



Medium Brown



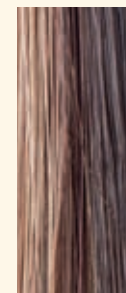
Golden Brown



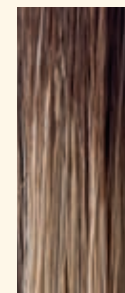
Light Chocolate



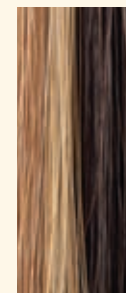
Pecan Brown



Coffee Latte-R



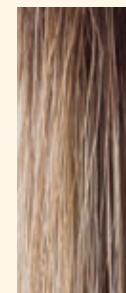
Chocolate Frost-R



Almond Rocka-R



Iced Mocha-R

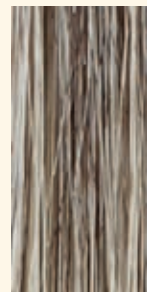


Maple Sugar-R

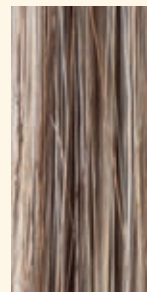
## BLONDS



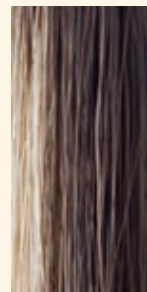
Harvest Gold



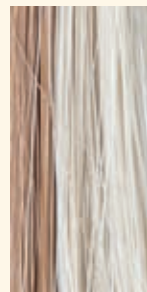
Sunny Blond



Frosti Blond



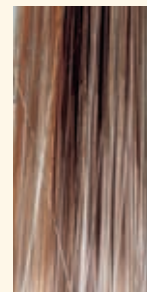
Butter Pecan



Chai Cream



Strawberry Swirl



Vanilla Lush



Butterscotch



Caramel Cream



Spring Honey



Gold Blond



Creamy Blond



Platinum Pearl

**SPECIAL ORDERS:** If you don't see a favorite style in this catalog or if you want a style designed in a different color, just contact your AHG sales consultant and ask about placing a "special order." We will do our very best to accommodate your requests! **1.800.353.7363**



## HYBRANT BLONDS



Butter Pecan-R Mocha-H Mochaccino-R Honey Wheat-R Nutmeg-R/F Sugar Cane -R Creamy Toast-R Creamy Toffee-R Spring Honey-R Sandalwood-H Champagne-R

## REDS



Burgundy Burgundy Rosa Red Pepper Garnet Glaze Ginger Highlight Bronzed Brown Chestnut Coconut Spice Dark Rust

## HYBRANT REDS



Cayenne Spice-R Raisin Glaze-H Terracotta-H Almond Spice-R Auburn Sugar-R Razberry Ice-R Irish Spice-R Burnt Sienna-R Copper Glaze-R

## GREYS



Black Onyx Midnite Pearl Sandy Silver™ Silver Stone™

## HYBRANT GREYS



Illumina-R

## LR COLORS (LONG ROOTED)

LR COLORS offer a dramatic ombré style root with a gradual lightening toward the ends.

## BRUNETTES



Marble Brown-LR

## BLENDS

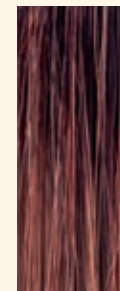


Banana Split-LR

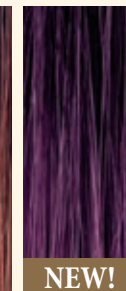


Macadamia-LR

## REDS



Crimson-LR



NEW!

Plumerry Jam-LR

A NEW SEASON AWAITS.  
GO AHEAD AND SHOW YOUR

# TRUE COLORS

NEW  
UNISEX



# EMERSON UNISEX 1698

THIS BOLD UNISEX CUT CAN  
BE WORN TOUSLED FOR A  
RUGGED MASCULINE LOOK  
OR STYLED INTO A SOFT,  
FEMININE SILHOUETTE.

Color Shown:  
Blueberry Burst **NEW!** (left)  
Illumina-R (right)

Fringe: 4.5" (11.5 cm)  
Crown: 3.9" (10 cm)  
Nape: 1.4" (3.5 cm)  
Weight: 2.5 oz (70 g)

## AVAILABLE COLORS:

### BRUNETTES:

Dark Chocolate  
Blueberry Burst **NEW!**  
Ginger Brown  
Kahlua Blast **NEW!**  
Marble Brown

### HYBRANT BRUNETTES:

Coffee Latte-R  
Chocolate Frost-R  
Iced Mocha-R

### HYBRANT BLONDS:

Mochaccino-R  
Sugar Cane-R  
Creamy Toffee-R  
Spring Honey-R  
Champagne-R

### HYBRANT REDS:

Razberry Ice-R

### HYBRANT GREYS:

Illumina-R

### GREYS:

Silver Stone™





NEW







# SKY LARGE CAP

## 1699

TOP SELLING STYLE NOW AVAILABLE IN A LARGER CAP SIZE – APPROXIMATELY 1.5” LARGER THAN THE ORIGINAL SIZE!

Color Shown:  
Kahlua Blast **NEW!** (left)  
Cappucino (right)

Fringe: 5.3” (13.5 cm)  
Crown: 5.3” (13.5 cm)  
Nape: 3.9” (10 cm)  
Weight: 2.8 oz (75 g)

### AVAILABLE COLORS:

#### BRUNETTES:

Cappucino  
Dark Chocolate  
Chocolate Swirl  
Ginger Brown  
Kahlua Blast **NEW!**  
Marble Brown

#### HYBRANT BRUNETTES:

Coffee Latte-R  
Iced Mocha-R

#### BLONDS:

Spring Honey  
Creamy Blond

#### HYBRANT BLONDS:

Mochaccino-R  
Nutmeg-F  
Sugar Cane-R  
Creamy Toffee-R  
Champagne-R

#### REDS:

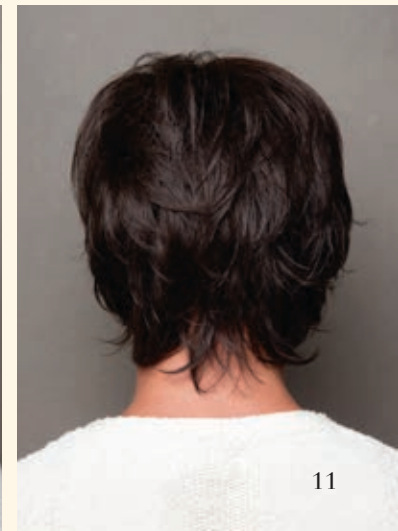
Chestnut

#### HYBRANT REDS:

Raisin Glaze-H  
Almond Spice-R

#### GREYS:

Sandy Silver™  
Silver Stone™



NEW



# ANGELICA PM

1696



ONE OF NORIKO'S BEST SELLERS  
NOW AVAILABLE IN A PARTIAL  
MONOFILAMENT CAP.

LONG, TEXTURED LAYERS FALL  
TO MID-BACK IN THIS FULL,  
“FLOWY” DESIGN.

Color Shown:  
Kahlua Blast **NEW!** (left)  
Ginger Brown (right)

Fringe: 8.5" (21.5 cm)  
Crown: 16.1" (41 cm)  
Nape: 16.1" (41 cm)  
Weight: 6.7 oz (192 g)

## AVAILABLE COLORS:

### BRUNETTES:

Cappucino  
Dark Chocolate  
Blueberry Burst **NEW!**  
Kahlua Blast **NEW!**  
Medium Brown

### HYBRANT BLONDS:

Mochaccino-R  
Honey Wheat-R  
Nutmeg-F  
Creamy Toffee-R  
Spring Honey-R  
Champagne-R

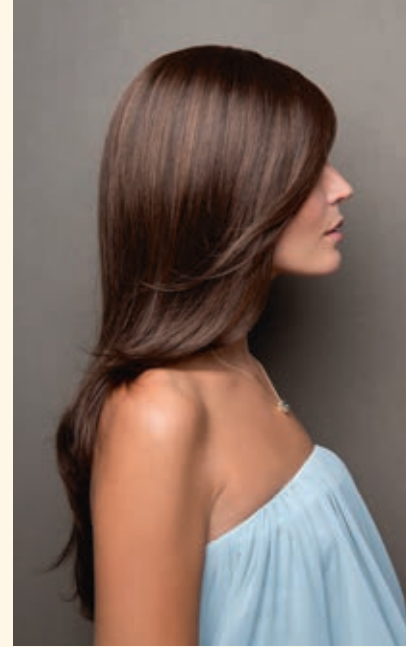
### LR BLONDS:

Marble Brown-LR  
Macadamia-LR

### LR REDS:

Crimson-LR  
Plumberry Jam-LR **NEW!**







NEW







# REESE PM 1697



ONE OF NORIKO'S BEST SELLERS NOW  
AVAILABLE IN A PARTIAL MONOFILAMENT CAP.

THIS SASSY BOB HAS TOUSLED LAYERS AND AN  
EDGY FRINGE.

Color Shown:  
Creamy Blond (left)  
Chocolate Frost-R (right)

Fringe: 6.1" (15.5 cm)  
Crown: 5.5" (14 cm)  
Nape: 4.1" (10.5 cm)  
Weight: 3.1 oz (88 g)

## AVAILABLE COLORS:

### BRUNETTES:

Blueberry Burst **NEW!**  
Chocolate Swirl  
Kahlua Blast **NEW!**

### HYBRANT BRUNETTES:

Chocolate Frost-R  
Iced Mocha-R  
Maple Sugar-R

### HYBRANT BLONDS:

Mochaccino-R  
Nutmeg-F  
Creamy Toffee-R  
Champagne-R

### HYBRANT REDS:

Almond Spice-R  
Razberry Ice-R

### HYBRANT GREYS:

Illumina-R

### LR BRUNETTES:

Marble Brown-LR

### LR REDS:

Plumberry Jam-LR **NEW!**





# GEORGIA

1681



THIS MEDIUM LENGTH,  
LONG-LAYERED STYLE HAS  
AN ELEGANT SIDE FRINGE.

Color Shown:  
Chocolate Lava

Fringe: 8.25" (21 cm)  
Crown: 11.8" (30 cm)  
Nape: 9.1" (23 cm)  
Weight: 4.9 oz (140 g)

## AVAILABLE COLORS:

### BRUNETTES:

Cappucino  
Chocolate Lava  
Dark Chocolate  
Chocolate Swirl  
Ginger Brown  
Marble Brown

### HYBRANT BRUNETTES:

Coffee Latte-R  
Almond Rocka-R

### BLONDS:

Vanilla Lush  
Spring Honey  
Creamy Blond

### HYBRANT BLONDS:

Honey Wheat-R  
Nutmeg-R  
Sugar Cane-R  
Creamy Toffee-R  
Champagne-R

### REDS:

Chestnut





# JESSIE

## 1670



HEAVILY RAZORED LAYERS AND  
SHARP ASYMMETRY ACCOMPLISH  
A STRIKING APPEARANCE.

Color Shown:  
Cayenne Spice-R

Fringe: 3" (7.5 cm)  
Crown: 3.9" (10 cm)  
Nape: 2.2" (5.5 cm)  
Weight: 2.1 oz (60 g)

#### AVAILABLE COLORS:

**BRUNETTES:**  
Dark Chocolate  
Java Frost  
Marble Brown  
Toasted Brown

**HYBRANT BRUNETTES:**  
Coffee Latte-R  
Maple Sugar-R

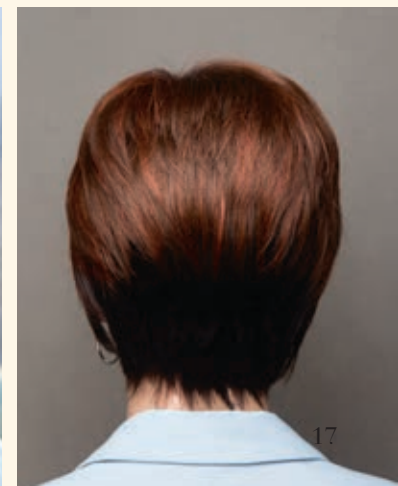
**BLONDS:**  
Spring Honey  
Creamy Blond

**HYBRANT BLONDS:**  
Butter Pecan-R  
Honey Wheat-R  
Sugar Cane-R  
Creamy Toffee-R

**REDS:**  
Garnet Glaze

**HYBRANT REDS:**  
Cayenne Spice-R  
Razberry Ice-R  
Irish Spice-R

**GREYS:**  
Silver Stone™



# JOLIE 1662



ADD TEXTURE AND VOLUME  
WITH THIS PERFECTLY  
LAYERED, MODERN BOB.



Color Shown:  
Kahlua Blast **NEW!**

Fringe: 5.5" (14 cm)  
Crown: 5.5" (14 cm)  
Nape: 3.9" (10 cm)  
Weight: 3.49 oz (99 g)

## AVAILABLE COLORS:

### BRUNETTES:

Cappucino  
Dark Chocolate  
Chocolate Swirl  
Ginger Brown  
Kahlua Blast **NEW!**  
Marble Brown  
Toasted Brown

### HYBRANT

#### BRUNETTES:

Coffee Latte-R  
Chocolate Frost-R  
Maple Sugar-R

### BLONDS:

Vanilla Lush  
Spring Honey  
Creamy Blond

### HYBRANT

#### BLONDS:

Butter Pecan-R  
Mocha-H  
Mochaccino-R  
Nutmeg-F  
Creamy Toast-R  
Creamy Toffee-R  
Champagne-R

### REDS:

Ginger Highlight  
Chestnut

### HYBRANT REDS:

Almond Spice-R  
Auburn Sugar-R  
Razberry Ice-R  
Copper Glaze-R

### GREYS:

Sandy Silver™  
Silver Stone™





# KENZIE 1684



STYLISH CUT FEATURING LONG,  
TEXTURED LAYERS ON THE BACK  
AND SIDES AND SWEEPING BANGS.

Color Shown: Mochaccino-R

Fringe: 5.1 - 7.1" (13-18 cm)  
Crown: 10.6" (27 cm)  
Nape: 8.7" (22 cm)  
Weight: 4.8 oz (136 g)

## AVAILABLE COLORS:

**BRUNETTES:**  
Espresso  
Cappucino  
Dark Chocolate  
Chocolate Swirl  
Ginger Brown  
Marble Brown  
Toasted Brown

**HYBRANT  
BRUNETTES:**  
Coffee Latte-R  
Almond Rocka-R  
Maple Sugar-R

**BLONDS:**  
Spring Honey  
Creamy Blond

**HYBRANT  
BLONDS:**  
Mochaccino-R  
Nutmeg-R  
Sugar Cane -R  
Creamy Toffee-R  
Champagne-R

**HYBRANT REDS:**  
Auburn Sugar-R  
Copper Glaze-R



# MADISON

1651



SIMPLY CLASSIC! ADD VOLUME WITH THIS  
WEDGE CUT WITH A TAPERED BACK.

Color Shown: Terracotta-H

Fringe: 3.9" (10 cm)  
Crown: 4.7" (12 cm)  
Nape: 2.6" (6.5 cm)  
Weight: 2.2 oz (62 g)

## AVAILABLE COLORS:

### BRUNETTES:

Cappucino  
Dark Chocolate  
Ginger Brown  
Marble Brown  
Toasted Brown

### BLONDS:

Harvest Gold  
Frosti Blond  
Strawberry Swirl  
Spring Honey  
Gold Blond  
Creamy Blond

### HYBRANT BLONDS:

Nutmeg-F  
Mocha-H  
Champagne-R

### REDS:

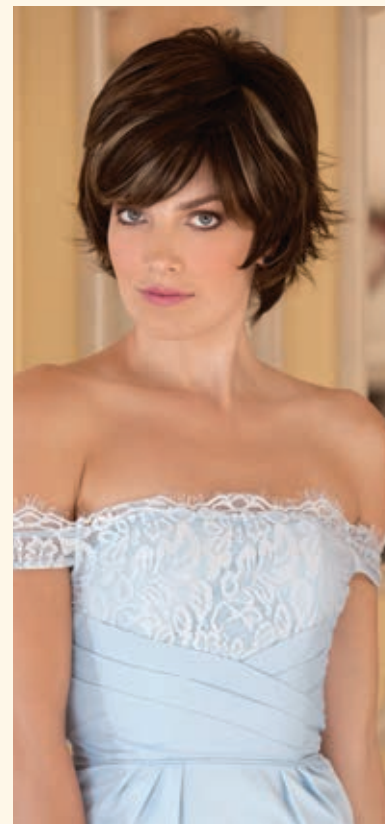
Chestnut

### HYBRANT REDS:

Raisin Glaze-H  
Terracotta-H







# RYAN

## 1653



**BE BOLD WITH THIS  
EYE-CATCHING  
FEATHERED,  
LAYERED CUT.**

Color Shown:  
Chocolate Swirl

Fringe: 3.9" (10 cm)  
Crown: 5.1 (13 cm)  
Nape: 3.5" (9 cm)  
Weight: 2.6 oz (74 g)

### AVAILABLE COLORS:

#### BRUNETTES:

Dark Chocolate  
Chocolate Swirl  
Ginger Brown  
Marble Brown  
Toasted Brown

#### HYBRANT BRUNETTES:

Iced Mocha-R  
Maple Sugar-R

#### BLONDS:

Harvest Gold  
Strawberry Swirl  
Spring Honey  
Gold Blond  
Creamy Blond

#### HYBRANT BLONDS:

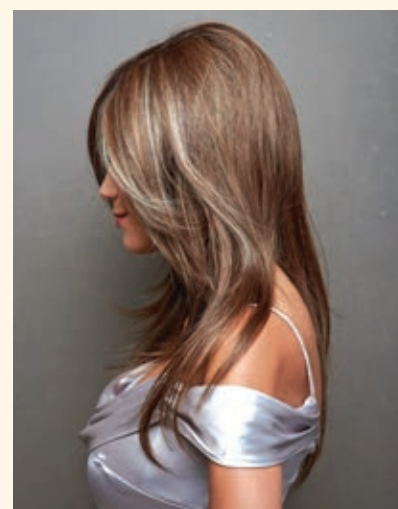
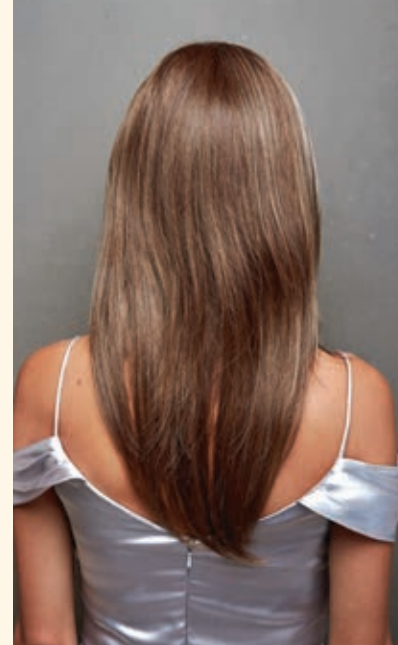
Mocha-H  
Mochaccino-R  
Nutmeg-F  
Creamy Toffee-R

#### REDS:

Ginger Highlight  
Chestnut  
Dark Rust

#### HYBRANT REDS:

Almond Spice-R  
Auburn Sugar-R  
Razberry Ice-R



# SHILO

## 1654



LONG, SOFT LAYERS  
CREATE GREAT  
MOVEMENT IN THIS  
FLIRTATIOUS STYLE.

Color Shown:  
Almond Spice-R

Fringe: 8.1" (20.5 cm)  
Crown: 15" (38 cm)  
Nape: 14.8" (37.5 cm)  
Weight: 5.7 oz (160 g)

### AVAILABLE COLORS:

#### BRUNETTES:

Expresso  
Cappucino  
Dark Chocolate  
Chocolate Swirl  
Ginger Brown  
Marble Brown  
Toasted Brown  
Medium Brown

#### BLONDS:

Spring Honey  
Gold Blond  
Creamy Blond

#### HYBRANT BLONDS:

Mocha-H  
Nutmeg-F  
Sandlewood-H  
Champagne-R

#### REDS:

Chestnut

#### HYBRANT REDS:

Raisin Glaze-H  
Almond Spice-R





# STACIE 1652



THIS WHIMSICAL, LAYERED  
CUT HAS WISPY, FLIPPED ENDS.

Color Shown:  
Chestnut

Fringe: 3.7" (9.5 cm)  
Crown: 4.9" (12.5 cm)  
Nape: 4.7" (12 cm)  
Weight: 2.5 oz (72 g)

## AVAILABLE COLORS:

**BRUNETTES:**  
Cappuccino  
Dark Chocolate  
Ginger Brown  
Marble Brown  
Toasted Brown

**BLONDS:**  
Harvest Gold  
Strawberry Swirl  
Vanilla Lush  
Spring Honey  
Gold Blond  
Creamy Blond

**HYBRANT BLONDS:**  
Mocha-H  
Nutmeg-F  
Champagne-R

**REDS:**  
Ginger Highlight  
Chestnut

**HYBRANT REDS:**  
Raisin Glaze-H





# TIA 1650



SPIKE OR TAME THIS  
SHORT POINT CUT.

Color Shown:  
Nutmeg-F

Fringe: 3.1" (8 cm)  
Crown: 3.1" (8 cm)  
Nape: 2.7" (7 cm)  
Weight: 2.12 oz (60 g)

## AVAILABLE COLORS:

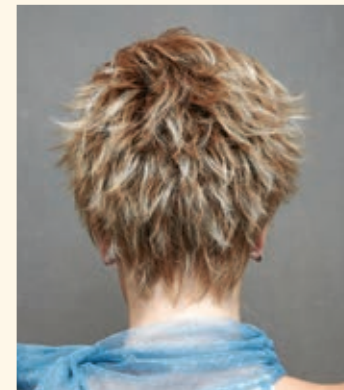
**BRUNETTES:**  
Dark Chocolate  
Ginger Brown  
Marble Brown  
Toasted Brown  
Medium Brown

**BLONDS:**  
Harvest Gold  
Frosti Blond  
Strawberry Swirl  
Spring Honey  
Creamy Blond

**HYBRANT BLONDS:**  
Nutmeg-F  
Champagne-R

**REDS:**  
Ginger Highlight  
Chestnut

**HYBRANT REDS:**  
Raisin Glaze-H







# CLAIRE PM

1695 

SOFT MODERN SHAG WITH  
SIDE SWIPED FRINGE.

Color Shown: Spring Honey-R

Fringe: 5.7" (14.5 cm)  
Crown: 8.3" (21 cm)  
Nape: 5.3" (13.5 cm)  
Weight: 3.2 oz (91 g)

## AVAILABLE COLORS:

### BRUNETTES:

Dark Chocolate  
Chocolate Swirl  
Ginger Brown  
Marble Brown  
Toasted Brown

**HYBRANT  
BRUNETTES:**  
Maple Sugar-R

**BLONDS:**  
Strawberry Swirl  
Vanilla Lush  
Creamy Blond

### HYBRANT

**BLONDS:**  
Mocha-H  
Mochaccino-R  
Nutmeg-F  
Spring Honey-R  
Creamy Toffee-R  
Champagne-R

**REDS:**  
Chestnut

**HYBRANT REDS:**  
Almond Spice-R  
Razberry Ice-R

**LR BRUNETTES:**  
Marble Brown-LR

**LR BLONDS:**  
Banana Split-LR  
Macadamia-LR

**LR REDS:**  
Crimson-LR







# JANELLE

## PM 1692



SEXY, SOFT LAYERS ADD  
FEMININE APPEAL TO  
THIS LONG STYLE.

Color Shown: Macadamia-LR

Fringe: 9" (23 cm)  
Crown: 12" (31 cm)  
Nape: 13.7" (35 cm)  
Weight: 5.5 oz (156 g)

### AVAILABLE COLORS:

#### BRUNETTES:

Espresso  
Cappucino  
Dark Chocolate  
Chocolate Swirl  
Ginger Brown  
Marble Brown  
Medium Brown

#### REDS:

Chestnut

#### HYBRANT REDS:

Almond Spice-R

#### LR BRUNETTES:

Marble Brown-LR

#### HYBRANT

#### BRUNETTES:

Almond Rocka-R  
Maple Sugar-R

#### LR BLONDS:

Banana Split-LR  
Macadamia-LR

#### LR REDS:

Crimson-LR

#### BLONDS:

Creamy Blond

#### HYBRANT

#### BLONDS:

Butter Pecan-R  
Mochaccino-R  
Nutmeg-R  
Sugar Cane-R  
Creamy Toffee-R  
Spring Honey-R  
Champagne-R





# JAX PM 1690



THIS EDGY, TAPERED CUT HAS A WISPY, A-SYMMETRIC FRINGE AND FACE-FRAMING POINTS.

Color Shown: Sugar Cane-R (main)  
Iced Mocha-R (insets)

Fringe: 4.3" (11 cm)  
Crown: 4.3" (11 cm)  
Nape: 2" (5 cm)  
Weight: 2.2 oz (63 g)

## AVAILABLE COLORS:

### BRUNETTES:

Cappucino  
Ginger Brown  
Marble Brown

### HYBRANT

#### BRUNETTES:

Coffee Latte-R  
Almond Rocka-R  
Iced Mocha-R

### BLONDS:

Creamy Blond  
Platinum Pearl

### HYBRANT BLONDS:

Mochaccino-R  
Nutmeg-R  
Sugar Cane-R  
Creamy Toffee-R  
Spring Honey-R

### HYBRANT REDS:

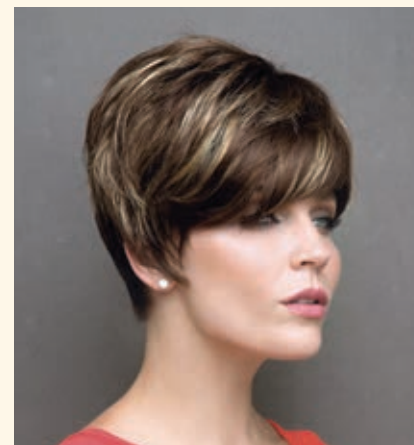
Razberry Ice-R

### GREYS:

Silver Stone™

### HYBRANT GREYS:

Illumina-R





# LULU PM

1691



HAVE FUN TOUSLING THE  
SOFT, WAVY LOCKS ON THIS  
CHIN-LENGTH TAPERED BOB.

Color Shown: Spring Honey-R (main  
Midnite Pearl (insets)

Fringe: 5.5" (14 cm)  
Crown: 5.5" (14 cm)  
Nape: 3" (7.5 cm)  
Weight: 2.8 oz (79 g)

## AVAILABLE COLORS:

### BRUNETTES:

Espresso  
Dark Chocolate  
Ginger Brown  
Marble Brown

### REDS:

Chestnut

### HYBRANT REDS:

Auburn Sugar-R

### HYBRANT

BRUNETTES:  
Maple Sugar-R

GREYS:  
Midnite Pearl  
Silver Stone™

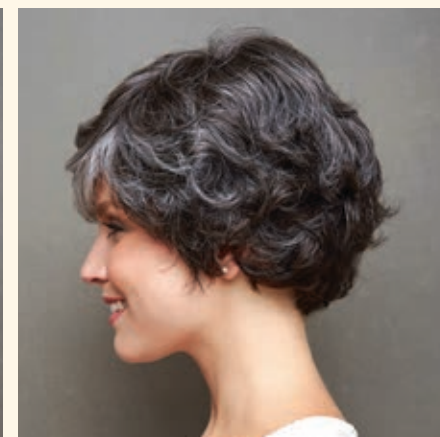
### BLONDS:

Creamy Blond

HYBRANT GREYS:  
Illumina-R

### HYBRANT

BLONDS:  
Mochaccino-R  
Nutmeg-R  
Sugar Cane-R  
Creamy Toffee-R  
Spring Honey-R  
Champagne-R







# SKY PM

## 1694



**SOFT FEATHERED BOB  
WITH TOUSLED FRINGE.**

Color Shown: Creamy Toffee-R

Fringe: 5.5" (14 cm)  
Crown: 5.1" (13 cm)  
Nape: 3.5" (9 cm)  
Weight: 2.8 oz (79 g)

### AVAILABLE COLORS:

**BRUNETTES:**  
Dark Chocolate  
Chocolate Swirl  
Ginger Brown  
Marble Brown  
Toasted Brown

**REDS:**  
Ginger Highlight  
Chestnut

**HYBRANT BRUNETTES:**  
Coffee Latte-R  
Iced Mocha-R  
Maple Sugar-R

**HYBRANT REDS:**  
Almond Spice  
Auburn Sugar-R  
Razberry Ice-R

**HYBRANT BLONDS:**  
Mochaccino-R  
Nutmeg-F  
Sugar Cane-R  
Creamy Toffee-R  
Spring Honey-R



# TESSA PM

## 1693



DRAMATIC A-LINE FALLS AT  
SHOULDER LENGTH WITH  
SLIGHTLY LONGER FRONT  
FOR A MODERN LOOK

Color Shown: Butter Pecan-R (main)  
Illumina-R (inset)  
Almond Rocka-R (insets)

Fringe: 13.8" (35 cm)  
Crown: 13.8" (35 cm)  
Nape: 3.5" (9 cm)  
Weight: 4.6 oz (130 g)

### AVAILABLE COLORS:

#### BRUNETTES:

Expresso  
Dark Chocolate  
Ginger Brown  
Marble Brown  
Toasted Brown

#### HYBRANT

#### BRUNETTES:

Coffee Latte-R  
Almond Rocka-R

#### BLONDS:

Creamy Blond

#### HYBRANT BLONDS:

Butter Pecan-R  
Nutmeg-R  
Creamy Toffee-R  
Spring Honey-R  
Champagne-R

#### HYBRANT REDS:

Razberry Ice-R

#### LR BRUNETTES

Marble Brown-LR

#### LR BLONDS:

Banana Split-LR  
Macadamia-LR

#### LR REDS:

Crimson-LR

#### HYBRANT GREYS:

Illumina-R





# ANGELICA

## 1625

LONG, TEXTURED LAYERS FALL  
TO MID-BACK IN THIS FULL  
“FLOWY” DESIGN.

Color Shown: Macadamia-LR

Fringe: 7.9" (20 cm)  
Crown: 16" (40.5 cm)  
Nape: 15.7" (40 cm)  
Overall: 26" (66 cm)  
Weight: 6.67 oz (189 g)

### AVAILABLE COLORS:

#### BRUNETTES:

Espresso  
Cappucino  
Dark Chocolate  
Chocolate Swirl  
Ginger Brown  
Marble Brown  
Toasted Brown  
Medium Brown  
Golden Brown

**HYBRANT  
BRUNETTES:**  
Almond Rocka-R  
Iced Mocha-R  
Maple Sugar-R

**BLONDS:**  
Vanilla Lush  
Spring Honey  
Creamy Blond

**HYBRANT  
BLONDS:**  
Butter Pecan-R  
Mocha-H  
Mochaccino-R  
Honey Wheat-R  
Nutmeg-F  
Sugar Cane-R  
Creamy Toffee-R  
Sandalwood-H  
Champagne-R

#### REDS:

Chestnut

#### HYBRANT REDS:

Raisin Glaze-H  
Almond Spice-R  
Auburn Sugar-R  
Razberry Ice-R  
Copper Glaze-R

**HYBRANT LONG  
ROOTED BLONDS:**  
Banana Split-LR  
Macadamia-LR

**HYBRANT LONG  
ROOTED REDS:**  
Crimson-LR

**HYBRANT GREYS:**  
Illumina-R







# AVERY

## 1677

THE LONG SOFT LAYERS  
AND WAVY CURLS CREATE  
SEXY, FEMININE APPEAL.

Color Shown: Coffee Latte-R

Fringe: 4.13" (11 cm)  
Crown: 11.8" (30 cm)  
Nape: 15.4" (39 cm)  
Weight: 5.7 oz (162 g)

### AVAILABLE COLORS:

#### BRUNETTES:

Espresso  
Cappuccino  
Dark Chocolate  
Chocolate Lava  
Ginger Brown  
Marble Brown  
Toasted Brown

#### HYBRANT BRUNETTES:

Coffee Latte-R  
Almond Rocka-R  
Maple Sugar-R

#### BLONDS:

Mochaccino-R  
Spring Honey  
Creamy Blond

#### HYBRANT BLONDS:

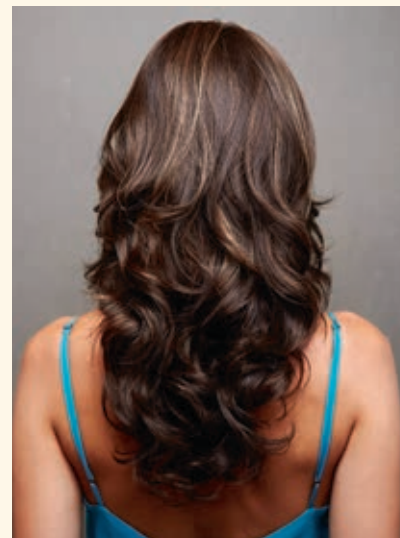
Honey Wheat-R  
Nutmeg-R  
Sugar Cane-R  
Creamy Toffee-R

#### REDS:

Chestnut

#### HYBRANT REDS:

Almond Spice-R  
Burnt Sienna-R





# CARRIE

## 1674

THIS TOUSLED, CURLY STYLE FALLS JUST BELOW THE SHOULDER AND HAS A SOFT, FACE-FRAMING FRINGE.

Color Shown:  
Honey Wheat-R

Fringe: 7" (18 cm)  
Crown: 10.4" (26.5 cm)  
Nape: 7.5" (19 cm)  
Weight: 5.2 oz (147 g)

### AVAILABLE COLORS:

**BRUNETTES:**  
Espresso  
Dark Chocolate  
Cappucino  
Ginger Brown  
Marble Brown  
Toasted Brown

**REDS:**  
Garnet Glaze  
Coconut Spice

**HYBRANT BRUNETTES:**  
Coffee Latte-R  
Almond Rocka-R  
Maple Sugar-R

**HYBRANT REDS:**  
Almond Spice-R  
Auburn Sugar-R  
Razberry Ice-R  
Irish Spice-R  
Copper Glaze-R

**BLONDS:**  
Spring Honey  
Creamy Blond

**HYBRANT BLONDS:**  
Butter Pecan-R  
Mochaccino-R  
Honey Wheat-R  
Nutmeg-R  
Sugar Cane-R  
Creamy Toffee-R  
Champagne-R





Color Shown: Iced Mocha-R

Fringe: 5.5" (14 cm)  
Crown: 8.3" (21 cm)  
Nape: 5.9" (15 cm)  
Weight: 3.2 oz (92 g)

**AVAILABLE COLORS:**

**BRUNETTES:**

Espresso  
Cappuccino  
Dark Chocolate  
Chocolate Swirl  
Ginger Brown  
Marble Brown  
Toasted Brown  
Medium Brown  
Light Chocolate

**HYBRANT BRUNETTES:**

Almond Rocka-R  
Iced Mocha-R  
Maple Sugar-R

**BLONDS:**

Harvest Gold  
Strawberry Swirl  
Vanilla Lush  
Caramel Cream  
Spring Honey  
Gold Blond  
Creamy Blond

**HYBRANT BLONDS:**

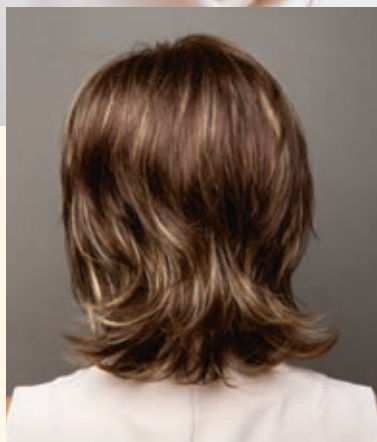
Mocha-H  
Mochaccino-R  
Honey Wheat-R  
Nutmeg-F  
Sugar Cane-R  
Creamy Toffee-R  
Sandalwood-H  
Champagne-R

**REDS:**

Chestnut

**HYBRANT REDS:**

Raisin Glaze-H  
Terracotta-H  
Almond Spice-R  
Razberry Ice-R  
Copper Glaze-R



## CLAIRE 1647

SHORT, LAYERED CUT FLIPS AT THE  
COLLAR AND HAS SOFT, TEXTURED EDGES.



# CORY 1633

THIS CLASSIC BOB FRAMES THE FACE  
WITH A SOFT, TEXTURED FRINGE.

Color Shown: Creamy Blond

Fringe: 3.1" (8 cm)  
Crown: 8.5" (21.5 cm)  
Nape: 1.8" (4.5 cm)  
Weight: 3.1 oz (89 g)

## AVAILABLE COLORS:

### BRUNETTES:

Espresso  
Cappuccino  
Dark Chocolate  
Ginger Brown  
Marble Brown  
Toasted Brown  
Medium Brown  
Light Chocolate  
Pecan Brown

### BLONDS:

Harvest Gold  
Frosti Blond  
Strawberry Swirl  
Vanilla Lush  
Caramel Cream  
Spring Honey  
Gold Blond  
Creamy Blond

### REDS:

Chestnut  
Dark Rust

### GREYS:

Sandy Silver™  
Silver Stone™





# DOLCE

## 1686

VOLUMINOUS WAVY LAYERS  
SOFTLY GRADUATE TO THE CHIN  
CREATING A CHIC, FLIRTY BOB.

Color Shown: Crimson-LR

Fringe: 6.1" (15.5 cm)  
Crown: 7.48" (19 cm)  
Nape: 2.8" (7 cm)  
Weight: 2.9 oz (83 g)

### AVAILABLE COLORS:

#### BRUNETTES:

Cappucino  
Dark Chocolate  
Ginger Brown  
Marble Brown  
Toasted Brown

#### HYBRANT BRUNETTES:

Chocolate Frost-R  
Coffee Latte-R  
Almond Rocka-R  
Iced Mocha-R  
Maple Sugar-R

#### BLONDS:

Spring Honey  
Creamy Blond

#### HYBRANT BLONDS:

Mochaccino-R  
Sugar Cane -R  
Creamy Toffee-R  
Nutmeg-R  
Champagne-R

#### REDS:

Chestnut

#### HYBRANT REDS:

Razberry Ice-R

#### HYBRANT LONG

#### ROOTED BLONDS:

Banana Split-LR  
Macadamia-LR

#### HYBRANT LONG

#### ROOTED REDS:

Crimson-LR

#### GREYS:

Silver Stone™





# DREW

## 1631

MAKE A BOLD STATEMENT  
WITH THIS "EDGY" LOOK  
CREATED USING AN  
OVERALL POINT-CUT  
LAYERING TECHNIQUE.

Color Shown:  
Creamy Toffee-R

Fringe: 2.8" (7 cm)  
Crown: 3.4" (8.5 cm)  
Nape: 2.4" (6 cm)  
Weight: 2.3 oz (66 g)

### AVAILABLE COLORS:

**BRUNETTES:**  
Cappucino  
Dark Chocolate  
Ginger Brown  
Marble Brown  
Light Chocolate

### HYBRANT BRUNETTES:

Chocolate Frost-R  
Iced Mocha-R  
Maple Sugar-R

### BLONDS:

Harvest Gold  
Frosti Blond  
Strawberry Swirl  
Spring Honey  
Creamy Blond

### HYBRANT BLONDS:

Butter Pecan-R  
Mocha-H  
Mochaccino-R  
Nutmeg-F  
Creamy Toffee-R  
Champagne-R

### REDS:

Burgundy Rosa  
Chestnut

### HYBRANT REDS:

Raisin Glaze-H  
Razberry Ice-R  
Copper Glaze-R

### GREYS:

Sandy Silver™  
Silver Stone™





# EVA

## 1672

THIS TIGHTLY  
TAPERED,  
INVERTED BOB  
HAS SOFT, TOP  
LAYERS THAT FALL  
INTO A SIDE-  
SWEEPED FRINGE.

Color Shown: Midnite Pearl

Fringe: 5.1" (13 cm)  
Crown: 4.5" (11.5 cm)  
Nape: 2" (5 cm)  
Weight: 2.15 oz (61 g)



### AVAILABLE COLORS:

**BRUNETTES:**  
Cappucino  
Dark Chocolate  
Ginger Brown  
Marble Brown  
Toasted Brown

**HYBRANT BRUNETTES:**  
Coffee Latte-R  
Almond Rocka-R  
Iced Mocha-R  
Maple Sugar-R

**BLONDS:**  
Spring Honey  
Creamy Blond

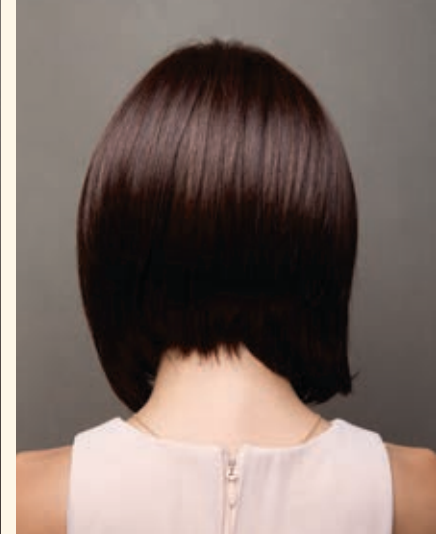
**HYBRANT BLONDS:**  
Mochaccino-R  
Honey Wheat-R  
Nutmeg-R  
Sugar Cane-R  
Creamy Toffee-R

**HYBRANT REDS:**  
Almond Spice-R  
Irish Spice-R

**GREYS:**  
Black Onyx  
Midnite Pearl  
Sandy Silver™  
Silver Stone™







# HAILEY

## 1680

THIS SLIGHTLY LONGER  
GRADUATED BOB HAS SUBTLE  
LAYERS IN THE FRONT.

Color Shown:  
Java Frost

Fringe: 7.1" (18 cm)  
Crown: 8.3" (21 cm)  
Nape: 2.4" (6 cm)  
Weight: 4.2 oz (120 g)

### AVAILABLE COLORS:

#### BRUNETTES:

Chocolate Lava  
Dark Chocolate  
Java Frost  
Ginger Brown  
Marble Brown

#### HYBRANT BRUNETTES:

Coffee Latte-R  
Chocolate Frost-R  
Almond Rocka-R  
Maple Sugar-R

#### BLONDS:

Spring Honey  
Creamy Blond

#### HYBRANT BLONDS:

Honey Wheat-R  
Nutmeg-R  
Sugar Cane-R  
Creamy Toffee-R  
Champagne-R

#### REDS:

Garnet Glaze

#### HYBRANT REDS:

Cayenne Spice-R



# IVY 1679

EDGY, PAGE-BOY STYLE  
IS CUT WITH A ROUND,  
HEAVY FRINGE.



Color Shown:  
Champagne-R

Fringe: 3.7" (9.5 cm)  
Crown: 4.7" (12 cm)  
Nape: 2" (5 cm)  
Weight: 2.29 oz (65 g)

## AVAILABLE COLORS:

**BRUNETTES:**  
Dark Chocolate  
Ginger Brown  
Marble Brown

**HYBRANT  
BRUNETTES:**  
Coffee Latte-R  
Chocolate Frost-R  
Almond Rocka-R  
Iced Mocha-R

**BLONDS:**  
Spring Honey  
Creamy Blond  
Platinum Pearl

**HYBRANT  
BLONDS:**  
Mochaccino-R  
Nutmeg-R  
Sugar Cane-R  
Creamy Toffee-R  
Champagne-R

**REDS:**  
Chestnut

**HYBRANT REDS:**  
Auburn Sugar-R  
Burnt Sienna-R

**GREYS:**  
Sandy Silver™  
Silver Stone™





# IZZIE 1688

TAPERED, UNISEX STYLE HAS A DRAMATIC ASYMMETRIC FRINGE FOR GRUNGY, INDIE-INSPIRED MALE LOOK OR SLEEK FEMININITY.

Color Shown:  
Dark Chocolate (main)  
Chestnut (insets)

Fringe: 7.48" (19 cm)  
Crown: 3.74" (9.5 cm)  
Nape: 1.97" (5 cm)  
Weight: 2.4 - 2.58 oz (68 - 73 g)

## AVAILABLE COLORS:

### BRUNETTES:

Cappucino  
Dark Chocolate  
Ginger Brown  
Marble Brown  
Toasted Brown

### HYBRANT BRUNETTES:

Coffee Latte-R  
Chocolate Frost-R  
Almond Rocka-R  
Iced Mocha-R  
Maple Sugar-R

### BLONDS:

Spring Honey  
Creamy Blond

### HYBRANT

#### BLONDS:

Mochaccino-R  
Nutmeg-R  
Sugar Cane -R  
Creamy Toffee-R  
Champagne-R

### LONG ROOTED BLONDS:

Banana Split-LR  
Macadamia-LR

### REDS:

Chestnut

### HYBRANT

#### REDS:

Raspberry Ice-R

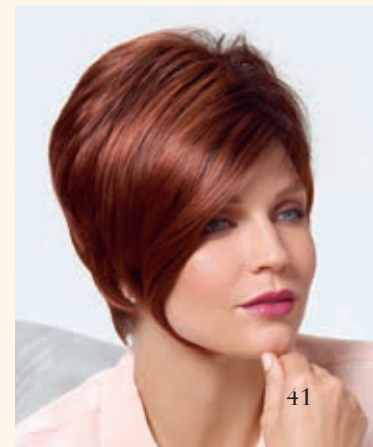
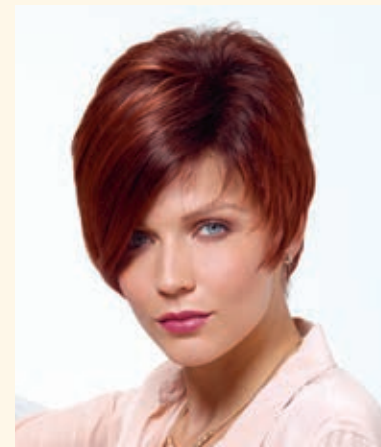
### LONG ROOTED

#### REDS:

Crimson-LR

### GREYS:

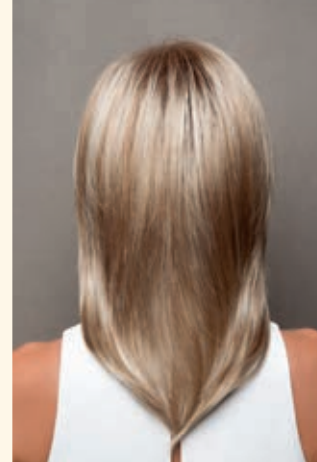
Silver Stone™



# JACKSON

## 1669

THIS SLEEK, SHOULDER LENGTH  
STYLE FEATURES FLATTERING,  
FACE-FRAMING LAYERS.



Color Shown:  
Sugar Cane-R

Fringe: 6.9" (17.5 cm)  
Crown: 9.1" (23 cm)  
Nape: 8.3" (21 cm)  
Weight: 4.27 oz (121 g)

### AVAILABLE COLORS:

#### BRUNETTES:

Espresso  
Cappuccino  
Dark Chocolate  
Chocolate Swirl  
Java Frost  
Ginger Brown  
Marble Brown  
Toasted Brown

#### HYBRANT BRUNETTES:

Chocolate Frost-R  
Almond Rocka-R  
Iced Mocha-R  
Maple Sugar-R

#### BLONDS:

Strawberry Swirl  
Spring Honey  
Creamy Blond

#### HYBRANT BLONDS:

Butter Pecan-R  
Mochaccino-R  
Honey Wheat-R  
Nutmeg-R  
Sugar Cane-R  
Creamy Toffee-R  
Champagne-R

#### REDS:

Ginger Highlight  
Chestnut

#### HYBRANT REDS:

Cayenne Spice-R  
Almond Spice-R  
Auburn Sugar-R  
Raspberry Ice-R  
Irish Spice-R  
Copper Glaze-R



# KATE

## 1668

GEOMETRIC, FRINGED  
BOB IS COMPLEMENTED  
BY RAZOR-FINISHED  
TIERS AND ARCHED ENDS.

Color Shown: Irish Spice-R

Fringe: 5.9" (15 cm)  
Crown: 4.7" (12 cm)  
Nape: 3.5" (9 cm)  
Weight: 2.54 oz (72 g)

### AVAILABLE COLORS:

#### BRUNETTES:

Cappucino  
Dark Chocolate  
Chocolate Swirl  
Java Frost  
Ginger Brown  
Marble Brown  
Toasted Brown

#### HYBRANT

#### BRUNETTES:

Chocolate Frost-R  
Iced Mocha-R  
Maple Sugar-R

#### REDS:

Garnet Glaze  
Ginger Highlight  
Chestnut

#### HYBRANT

#### REDS:

Almond Spice-R  
Razberry Ice-R  
Irish Spice-R  
Copper Glaze-R

#### GREYS:

Sandy Silver™

#### BLONDS:

Spring Honey  
Creamy Blond

#### HYBRANT BLONDS:

Butter Pecan-R  
Mochaccino-R  
Nutmeg-R  
Creamy Toffee-R  
Champagne-R



# LEXY

## 1642

CAREFREE LAYERED  
CUT WITH WHIMSICAL,  
FLIPPED ENDS.



Color Shown:  
Champagne-R

Fringe: 3.9" (10 cm)  
Crown: 4.3" (11 cm)  
Nape: 4.7" (12 cm)  
Weight: 2.86 oz (81 g)

### AVAILABLE COLORS:

#### BRUNETTES:

Cappucino  
Dark Chocolate  
Ginger Brown  
Marble Brown  
Toasted Brown  
Medium Brown

#### BLONDS:

Harvest Gold  
Strawberry Swirl  
Spring Honey  
Creamy Blond

#### HYBRANT BLONDS:

Mocha-H  
Nutmeg-F  
Sandalwood-H  
Champagne-R

#### REDS:

Chestnut

#### HYBRANT REDS:

Raisin Glaze-H  
Terracotta-H







# MARIAH

## 1613

SOFT, TOUSLED CURLS FRAME  
THIS CHIN-LENGTH BOB.

Color Shown: Harvest Gold

Fringe: 4.1" (10.5 cm)  
Crown: 4.9" (12.5 cm)  
Nape: 4.3" (11 cm)  
Weight: 3.21 oz (91 g)

### AVAILABLE COLORS:

**BRUNETTES:**  
Cappuccino  
Dark Chocolate  
Ginger Brown  
Marble Brown  
Medium Brown  
Light Chocolate

**BLONDS:**  
Harvest Gold  
Sandy Blond  
Vanilla Lush  
Spring Honey  
Gold Blond  
Creamy Blond

**REDS:**  
Chestnut  
Dark Rust



Color Shown:  
Copper Glaze-R

Fringe: 2.4" (6 cm)  
Crown: 3" (7.5 cm)  
Nape: 1.6" (4 cm)  
Weight: 2.61 oz (74 g)

**AVAILABLE COLORS:**

**BRUNETTES:**

Cappucino  
Dark Chocolate  
Chocolate Swirl  
Ginger Brown  
Marble Brown  
Toasted Brown  
Medium Brown  
Pecan Brown

**HYBRANT BRUNETTES:**

Iced Mocha-R  
Maple Sugar-R

**BLONDS:**

Harvest Gold  
Frosti Blond  
Strawberry Swirl  
Vanilla Lush  
Caramel Cream  
Spring Honey  
Gold Blond  
Creamy Blond

**HYBRANT BLONDS:**

Mochaccino-R  
Nutmeg-F  
Creamy Toffee-R  
Sandalwood-H  
Champagne-R

**REDS:**

Burgundy Rosa  
Chestnut

**HYBRANT REDS:**

Almond Spice-R  
Auburn Sugar-R  
Razberry Ice-R  
Copper Glaze-R

**GREYS:**

Silver Stone™

# MASON

## 1632

MIXED LAYERS WITH  
BEVELED ENDS GIVES THIS  
STYLE ATTITUDE AND A  
SOPHISTICATED "KICK".





# MAY

## 1673

ELEGANTLY RELAXED  
BOB HAS A WISPY  
PERIMETER AND  
FEATHERY-SWEPT SIDES.

Color Shown:  
Chocolate Frost-R

Fringe: 7" (18 cm)  
Crown: 9" (23 cm)  
Nape: 3.9" (10 cm)  
Weight: 3.63 oz (103 g)

### AVAILABLE COLORS:

#### BRUNETTES:

Cappucino  
Dark Chocolate  
Java Frost  
Ginger Brown  
Marble Brown

#### HYBRANT BRUNETTES:

Coffee Latte-R  
Chocolate Frost-R  
Almond Rocka-R  
Iced Mocha-R  
Maple Sugar-R

#### BLONDS:

Spring Honey  
Creamy Blond

#### HYBRANT BLONDS:

Butter Pecan-R  
Mochaccino-R  
Honey Wheat-R  
Nutmeg-R  
Sugar Cane-R  
Creamy Toffee-R  
Champagne-R

#### REDS:

Garnet Glaze

#### HYBRANT REDS:

Cayenne Spice-R  
Razberry Ice-R  
Irish Spice-R





# MEGAN 1607

THIS SEMI-WEDGE BOB  
TAPERS IN THE BACK.

Color Shown: Frosti Blond

Fringe: 4.5" (11.5 cm)  
Crown: 4.9" (12.5 cm)  
Nape: 2.2" (5.5 cm)  
Weight: 2.68 oz (76 g)

## AVAILABLE COLORS:

### BRUNETTES:

Cappucino  
Dark Chocolate  
Ginger Brown  
Marble Brown  
Toasted Brown  
Medium Brown  
Light Chocolate

### REDS:

Chestnut  
Dark Rust

### GREYS:

Sandy Silver™  
Silver Stone™

### BLONDS:

Harvest Gold  
Sunny Blond  
Frosti Blond  
Strawberry Swirl  
Vanilla Lush  
Caramel Cream  
Spring Honey  
Creamy Blond



# MILLIE

## 1655

A CLASSIC STYLE WITH A MODERN TWIST. THE EXAGGERATED, WISPY NECKLINE AND POINT-SPECIFIC LAYERS ARE DESIGNED TO HIGHLIGHT THE CHEEKBONES AND OPEN UP THE FACE.

Color Shown:  
Toasted Brown

Fringe: 3.7" (9.5 cm)  
Crown: 4.7" (12 cm)  
Nape: 4.7" (12 cm)  
Weight: 2.5 oz (71 g)

### AVAILABLE COLORS:

#### BRUNETTES:

Cappuccino  
Dark Chocolate  
Chocolate Swirl  
Ginger Brown  
Marble Brown  
Toasted Brown

#### HYBRANT BRUNETTES:

Iced Mocha-R  
Maple Sugar-R

#### BLONDS:

Spring Honey  
Creamy Blond

#### HYBRANT BLONDS:

Mocha-H  
Mochaccino-R  
Nutmeg-F  
Creamy Toffee-R  
Sandalwood-H  
Champagne-R

#### REDS:

Ginger Highlight  
Chestnut

#### HYBRANT REDS:

Almond Spice-R  
Auburn Sugar-R  
Razberry Ice-R  
Copper Glaze-R

#### GREYS:

Midnite Pearl  
Silver Stone™





# MORGAN

## 1675

SHORT, FUN AND FLIPPY! THIS CHIC STYLE FEATURES WISPY BANGS AND A TAPERED NECK.

Color Shown:  
Almond Rocka-R

Fringe: 3.7" (9.5 cm)  
Crown: 5.7" (14.5 cm)  
Nape: 2" (5 cm)  
Weight: 2.79 oz (79 g)

### AVAILABLE COLORS:

**BRUNETTES:**  
Cappucino  
Dark Chocolate  
Ginger Brown  
Marble Brown

**HYBRANT  
BRUNETTES:**  
Coffee Latte-R  
Almond Rocka-R  
Iced Mocha-R  
Maple Sugar-R

**BLONDS:**  
Spring Honey  
Creamy Blond  
Platinum Pearl

**HYBRANT  
BLONDS:**  
Mochaccino-R  
Honey Wheat-R  
Nutmeg-R  
Sugar Cane-R  
Creamy Toffee-R

**REDS:**  
Chestnut

**HYBRANT  
REDS:**  
Cayenne Spice-R  
Razberry Ice-R  
Burnt Sienna-R  
Copper Glaze-R

**GREYS:**  
Silver Stone™







# NORI

## 1682

A SHORT AND  
SHAGGY STYLE WITH  
RAZORED, TEXTURED  
FRINGE AND NAPE.

Color Shown:  
Nutmeg-R

Fringe: 3.5" (9 cm)  
Crown: 4.7" (12 cm)  
Nape: 3.1" (8 cm)  
Weight: 2.6 oz (73 g)

### AVAILABLE COLORS:

**BRUNETTES:**  
Espresso  
Dark Chocolate  
Chocolate Swirl  
Java Frost  
Ginger Brown  
Marble Brown  
Toasted Brown

**HYBRANT  
BRUNETTES:**  
Coffee Latte-R  
Chocolate Frost-R  
Almond Rocka-R  
Iced Mocha-R  
Maple Sugar-R

**BLONDS:**  
Spring Honey

**HYBRANT BLONDS:**  
Butter Pecan-R  
Mochaccino-R  
Nutmeg-R  
Sugar Cane-R  
Creamy Toffee-R  
Champagne-R

**REDS:**  
Chestnut

**HYBRANT REDS:**  
Almond Spice-R  
Razberry Ice-R  
Copper Glaze-R

**GREYS:**  
Silver Stone™







# PAM 1606

A BASIC SHORT CUT WITH FEATHERED LAYERS.

Color Shown:  
Marble Brown

Fringe: 2.4" (6 cm)  
Crown: 3.1" (8 cm)  
Nape: 1.6" (4 cm)  
Weight: 2.1 oz (59 g)

## AVAILABLE COLORS:

**BRUNETTES:**  
Cappucino  
Dark Chocolate  
Ginger Brown  
Marble Brown  
Medium Brown  
Golden Brown  
Light Chocolate

**BLONDS:**  
Harvest Gold  
Frosti Blond  
Strawberry Swirl  
Vanilla Lush  
Spring Honey  
Gold Blond  
Creamy Blond

**REDS:**  
Chestnut

**GREYS:**  
Silver Stone™  
38  
51  
56





# REESE

## 1660

THIS SASSY BOB  
HAS TOUSLED  
LAYERS AND AN  
EDGY FRINGE.

Color Shown:  
Red Pepper

Fringe: 5" (12.5 cm)  
Crown: 5.9" (15 cm)  
Nape: 3.9" (10 cm)  
Weight: 2.89 oz (82 g)

### AVAILABLE COLORS:

#### BRUNETTES:

Espresso  
Cappucino  
Dark Chocolate  
Chocolate Swirl  
Ginger Brown  
Marble Brown  
Toasted Brown

#### HYBRANT BRUNETTES:

Chocolate Frost-R  
Iced Mocha-R  
Maple Sugar-R

#### BLONDS:

Harvest Gold  
Strawberry Swirl  
Vanilla Lush  
Spring Honey  
Gold Blond  
Creamy Blond

#### HYBRANT BLONDS:

Butter Pecan-R  
Mocha-H  
Mochaccino-R  
Nutmeg-F  
Creamy Toast-R  
Creamy Toffee-R  
Sandalwood-H  
Champagne-R

#### REDS:

Red Pepper  
Ginger Highlight  
Chestnut

#### HYBRANT REDS:

Raisin Glaze-H  
Terracotta-H  
Almond Spice-R  
Auburn Sugar-R  
Razberry Ice-R  
Irish Spice-R  
Copper Glaze-R

#### GREYS:

Sandy Silver™  
Silver Stone™



# ROBIN 1639

STUNNING! THE GRADUATED,  
INTERIOR LAYERS CREATE  
A SOFT SILHOUETTE WITH  
MAXIMUM MOVEMENT.

Color Shown: Light Chocolate

Fringe: 4.3" (11 cm)  
Crown: 17.5" (44.5 cm)  
Nape: 17.3" (44 cm)  
Overall: 25" (63.5 cm)  
Weight: 5.11 oz (145 g)

## AVAILABLE COLORS:

**BRUNETTES:**  
Expresso  
Cappucino  
Dark Chocolate  
Chocolate Swirl  
Ginger Brown  
Marble Brown  
Toasted Brown  
Light Chocolate  
Pecan Brown

**BLONDS:**  
Harvest Gold  
Vanilla Lush  
Caramel Cream  
Spring Honey  
Gold Blond  
Creamy Blond

**HYBRANT  
BLONDS:**  
Nutmeg-F  
Sandalwood-H  
Champagne-R

**REDS:**  
Burgundy Rosa  
Chestnut

**HYBRANT  
REDS:**  
Almond Spice-R







# RONI 1641

MAXIMIZED VOLUME! THIS BOLD, MULTI-LAYERED STYLE IS FULL OF TEXTURE AND HUGS THE NAPE WITH TAPERED EDGES.

Color Shown: Strawberry Swirl

Fringe: 4.5" (11.5 cm)  
Crown: 4.3" (11 cm)  
Nape: 2" (5 cm)  
Weight: 2.36 oz (67 g)

## AVAILABLE COLORS:

### BRUNETTES:

Cappucino  
Dark Chocolate  
Ginger Brown  
Marble Brown

### REDS:

Burgundy Rosa  
Paprika-R  
Chestnut

### BLONDS:

Harvest Gold  
Frosti Blond  
Strawberry Swirl  
Vanilla Lush  
Caramel Cream  
Spring Honey

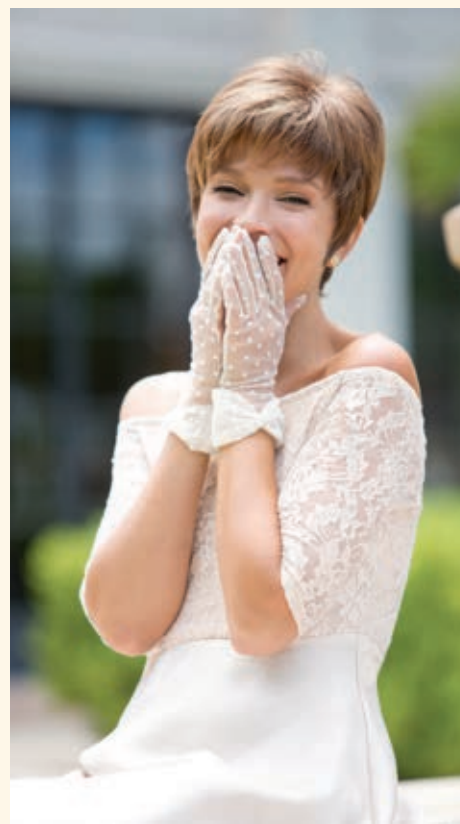




# SALLY

## 1616

SHORT LAYERS AND A  
SOFT FRINGE FRAME THE  
FACE WHILE A TAPERED  
BACK HUGS THE NAPE.



Color Shown:  
Marble Brown

Fringe: 3.9" (10 cm)  
Crown: 4.9" (12.5 cm)  
Nape: 2.4" (6 cm)  
Weight: 2.7 oz (77 g)

### AVAILABLE COLORS:

#### BRUNETTES:

Cappucino  
Dark Chocolate  
Ginger Brown  
Marble Brown  
Toasted Brown  
Medium Brown  
Light Chocolate

#### BLONDS:

Frosti Blond  
Strawberry Swirl  
Vanilla Lush  
Spring Honey  
Gold Blond  
Creamy Blond

#### REDS:

Chestnut

#### GREYS:

Silver Stone™



# SANDIE 1648

THIS TEXTURED BOB HAS  
A TOUSLED FINISH.

Color Shown:  
Auburn Sugar-R

Fringe: 5.1" (13 cm)  
Crown: 6.3" (16 cm)  
Nape: 3.5" (9 cm)  
Weight: 2.75 oz (78 g)

## AVAILABLE COLORS:

**BRUNETTES:**  
Espresso  
Dark Chocolate  
Ginger Brown  
Marble Brown  
Toasted Brown  
Pecan Brown

**HYBRANT  
BRUNETTES:**  
Iced Mocha-R  
Maple Sugar-R

**BLONDS:**  
Harvest Gold  
Strawberry Swirl  
Vanilla Lush  
Spring Honey  
Creamy Blond

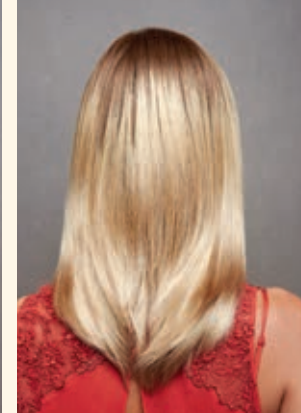
**HYBRANT  
BLONDS:**  
Mocha-H  
Mochaccino-R  
Nutmeg-F  
Creamy Toffee-R  
Sandalwood-H  
Champagne-R

**REDS:**  
Ginger Highlight  
Chestnut  
Dark Rust

**HYBRANT REDS:**  
Raisin Glaze-H  
Auburn Sugar-R

**GREYS:**  
Midnite Pearl  
Silver Stone™





Color Shown:  
Banana Split-LR

Fringe: 5.1" (13 cm)  
Crown: 10.6" (27 cm)  
Nape: 9.8" (25 cm)  
Weight: 5.43 oz (154 g)

**AVAILABLE COLORS:**

**BRUNETTES:**

Espresso  
Dark Chocolate  
Chocolate Swirl  
Java Frost  
Ginger Brown  
Marble Brown

**HYBRANT BRUNETTES:**

Coffee Latte-R  
Almond Rocka-R  
Iced Mocha-R  
Maple Sugar-R

**BLONDS:**

Spring Honey  
Creamy Blond

**HYBRANT BLONDS:**

Butter Pecan-R  
Mochaccino-R  
Nutmeg-R  
Creamy Toffee-R

**LONG ROOTED  
BLOND COLORS:**

Banana Split-LR  
Macadamia-LR

**HYBRANT REDS:**

Almond Spice-R  
Irish Spice-R  
Copper Glaze-R

**LONG ROOTED  
RED COLORS:**

Crimson-LR



# SEVILLE 1685

CLASSIC, MEDIUM-LENGTH STYLE FEATURES A  
SUBTLE A-LINE PERIMETER AND SQUARE LAYERS.





# SKY 1649

A WISPY VOLUMINOUS BOB  
WITH SOFT, FEATHERY LAYERS.

Color Shown:  
Creamy Toffee-R

Fringe: 5.5" (14 cm)  
Crown: 5.1" (13 cm)  
Nape: 3.5" (9 cm)  
Weight: 2.79 oz (79 g)

## AVAILABLE COLORS:

### BRUNETTES:

Espresso  
Cappucino  
Dark Chocolate  
Chocolate Swirl  
Ginger Brown  
Marble Brown  
Toasted Brown  
Medium Brown  
Light Chocolate  
Pecan Brown

### HYBRANT

**BRUNETTES:**  
Coffee Latte-R  
Almond Rocka-R  
Iced Mocha-R  
Maple Sugar-R

### BLONDS:

Harvest Gold  
Frosti Blond  
Strawberry Swirl  
Vanilla Lush  
Caramel Cream  
Spring Honey  
Gold Blond  
Creamy Blond

### HYBRANT

**BLONDS:**  
Butter Pecan-R  
Mocha-H  
Mochaccino-R  
Honey Wheat-R  
Nutmeg-F  
Sugar Cane-R  
Creamy Toffee-R  
Sandalwood-H  
Champagne-R

### REDS:

Burgundy  
Burgundy Rosa  
Red Pepper  
Ginger Highlight  
Bronzed Brown  
Chestnut  
Dark Rust

### HYBRANT REDS:

Raisin Glaze-H  
Terracotta-H  
Almond Spice-R  
Auburn Sugar-R  
Razberry Ice-R  
Copper Glaze-R

### GREYS:

Black Onyx  
Midnite Pearl  
Sandy Silver™  
Silver Stone™



## HAIR ENHANCEMENT

# BERLIN

## 1665

ENHANCE YOUR HAIR WITH  
FLATTERING VERSATILITY.

Color Shown:  
Gold Blond

Fringe: 5.5" (14 cm)  
Crown: 5.1" (13 cm)  
Nape: 4.3" (11 cm)  
Weight: 2.29 oz (65 g)

### AVAILABLE COLORS:

#### BRUNETTES:

Espresso  
Cappucino  
Dark Chocolate  
Chocolate Swirl  
Ginger Brown  
Marble Brown  
Toasted Brown

#### BLONDS:

Harvest Gold  
Spring Honey  
Gold Blond  
Creamy Blond

#### HYBRANT BLONDS:

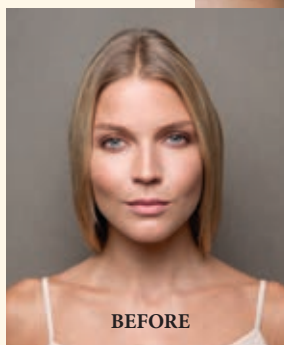
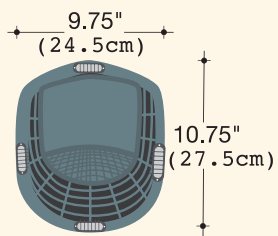
Nutmeg-F  
Creamy Toast-R

#### REDS:

Chestnut

#### HYBRANT REDS:

Almond Spice-R







## HAIR ENHANCEMENT

# MILAN

## 1658

AN INNOVATIVE HAIR  
ENHANCEMENT THAT ADDS  
LENGTH AND SMOOTH FACE  
FRAMING LAYERS.

Color Shown:  
Creamy Toast-R

Fringe: 8.5" (21.5 cm)  
Crown: 14" (35.5 cm)  
Nape: 13.5" (34.3 cm)  
Weight: 4 oz (115 g)

### AVAILABLE COLORS:

#### BRUNETTES:

Espresso  
Cappucino  
Dark Chocolate  
Chocolate Swirl  
Ginger Brown  
Marble Brown  
Toasted Brown

#### HYBRANT BLONDS:

Nutmeg-F  
Creamy Toast-R  
Sandalwood-H  
Champagne-R

#### REDS:

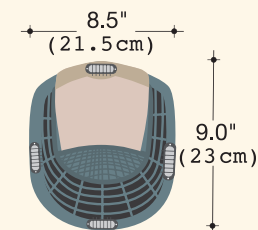
Chestnut

#### BLONDS:

Harvest Gold  
Vanilla Lush  
Spring Honey  
Gold Blond  
Creamy Blond

#### HYBRANT REDS:

Raisin Glaze-H  
Almond Spice-R



# ACCESSORIES



6738  
BAMBOO  
TURBAN

Available Colors:  
Black, Grey, Navy Blue,  
Royal Blue, Light Blue,  
Dusty Rose, Light Beige



8123  
21" MANNEQUIN

DISPLAY  
MANNEQUINS



8119  
14" MANNEQUIN



**NEW**  
9584  
ROP WIG STAND

9582  
WIG STAND  
PACKAGE

(3pc package  
contains colors:  
Black, Blue &  
Gray)



Sold separately:  
9583 BLACK, 9583 BLUE, 9583 GRAY

Convenient "snap together" stand for wig storage or service.



965  
WIRE BRUSH



9580  
WIG CAP  
Available Colors:  
Beige, Black, and Brown



9581  
WIG LINER  
Open Mesh  
Available Colors:  
Beige, Black, and Brown





9950  
ROP Shampoo  
8 oz.

9951  
ROP Revive Liquid  
Enhancement 8 oz.

9952  
ROP Protect Holding  
Spray 8 oz.

## NORIKO™ MAINTENANCE TOOLS

### RENE OF PARIS PREPARE SHAMPOO

This luxurious shampoo is formulated with the ultimate in moisture replenishing cleansers. Rene of Paris Prepare Shampoo helps maintain the smoothness, strength and polish of your hair.

The gentle combination of plant and vegetable extracts, along with natural essential oils and vitamins, provides a gentle but thorough cleansing of your hair. The results will revolutionize how you feel in your hair.

### RENE OF PARIS REVIVE LIQUID ENHANCEMENT

The finest advanced liquid developed for synthetic fiber hair. Rene of Paris Revive Liquid Enhancement will revive your hair and give it the brand new feel.

Not only helps eliminate frizz while adding luster, texture and volume, but also protects your hair from the daily stresses.

### RENE OF PARIS PROTECT HOLDING SPRAY

The final stop in maintaining and styling your hair. This holding spray adds shine while gently, yet firmly, holding your desired style.



9511  
SWATCHES

The color swatches let you see  
your perfect hair match.

We are delighted that you have chosen to become one of our valued customers. We appreciate your business as well as any inquiries regarding the following:

#### APPLICABILITY:

1. The following terms and conditions ("Terms") are the only terms which govern the sale of the goods ("Goods") by Aderans Hair Goods, Inc. ("AHG") to its customers (each referred to hereafter as "Buyer," or "You"). Notwithstanding anything herein to the contrary, if a written contract signed by both parties is in existence covering the sale of the Goods covered hereby, the terms and conditions of said contract shall prevail to the extent they are inconsistent with these Terms.

2. These Terms, together with the applicable invoice and the Statement of Policy defined below (collectively, this "Agreement"), comprise the entire agreement between the parties, and supersede all prior or contemporaneous understandings, agreements, negotiations, representations and warranties, and communications, both written and oral. These Terms prevail over any of Buyer's general terms and conditions of purchase regardless whether or when Buyer has submitted its purchase order or such terms. Acceptance of Buyer's purchase order or fulfillment of Buyer's order does not constitute acceptance of any of Buyer's terms and conditions and does not serve to modify or amend these Terms.

**ACCEPTANCE OF PURCHASE ORDER.** AHG has the right, in its sole discretion, to accept or reject any purchase order issued by You. AHG may accept any purchase order by confirming the order (whether by written confirmation, invoice or otherwise) or by delivering the Goods, whichever occurs first. No purchase order is binding on AHG unless accepted by AHG.

**PRICES.** You shall purchase the Goods from AHG at the prices set forth in AHG's price list in effect at the time that AHG accepts Your purchase order ("Prices"). Prices are exclusive of, and You are solely responsible for, and shall pay, any and all taxes, with respect to, or measured by, the manufacture, sale, shipment, use or Price of the Goods; provided, however, that You shall not be responsible for any taxes imposed on, or with respect to, AHG's income, revenues,

gross receipts, personnel or real or personal property or other assets.

**PAYMENT TERMS:** AHG accepts payment by Visa, MasterCard, AMEX, Discover, money order, wire transfer and COD. Upon approval, credit terms may be available.

**CREDIT PURCHASES:** If You wish to apply for an AHG 30-day open account (NET -30), contact Your AHG sales representative and request a credit application.

**SHIPPING/HANDLING:** You will pay for all shipping charges and insurance costs. AHG offers shipping via UPS next day air, 2-3 day air, and ground. There is a handling charge of \$1.00 for all orders. For each purchase order accepted by AHG, AHG may, in its sole discretion, without liability or penalty, make partial shipments of Goods to You. Each shipment will constitute a separate sale and You will pay for the units shipped whether such shipment is in whole or partial fulfillment of a purchase order.

**TRANSFER OF TITLE & RISK OF LOSS:** Title passes to You upon delivery of the Goods to the address You specified in the purchase order. Risk of loss or damage to the Goods passes to You upon AHG's tender of such units to the carrier at AHG's location in Chatsworth, CA.

**STATEMENT OF POLICY:** You must comply with the Statement of Policy and Guidelines for Using Aderans' Trademarks and Copyrights (the "Statement of Policy") which was provided to You and which may be modified or updated by AHG from time to time in its sole discretion.

**RETURN POLICY:** Returns will not be accepted unless pre-authorized by (AHG). Requests must be made within 30 days from receipt of Goods. Upon approval and receipt of the authorization for return label, Goods meeting the following conditions may be returned for an exchange or direct credit to Your account (freight prepaid by Buyer). NO cash refunds! If an item is to be exchanged, new shipping and handling charges will be added.

1. A copy of Your invoice must accompany all returns. The authorization for return label must be placed on the outside of the box (complete with the authorization number) and Your return address. If not, the box will be refused.

2. Returned Goods must be in MINT CONDITION. Mint condition is defined by AHG as: no missing tags or labels, the hair net is not removed, item(s) are not combed/fluffed or tried on by a customer. All returns must be in original shipping box. There is a restocking fee of \$10.00 for EACH piece returned.

3. AHG has carefully designed its product packaging to protect the product integrity. AHG is not responsible for damage to or problems with any product where the product and/or shipment packaging has been changed per Your request. No returns will be accepted under these conditions.

4. Shipping and handling fees are non-refundable.

5. Any DISCONTINUED items are not returnable.

6. AHG is not responsible for lost return packages.

It is recommended that You keep proper Proof-of-Delivery. Goods not meeting the above stipulations will be refused. AHG will not accept returns more than 30 days after receipt of Goods. If there is a factory defect or an incorrectly shipped item due to our error, a full exchange or credit will be applied directly to Your account. Note: If an item is returned for a "defective" credit and upon examination found not to be defective, credit will only be given for the item's original price (providing it still meets the above standards), and a \$10.00 restocking charge will be applied. Any additional product not authorized for return will be sent back.

**NOTE:** Colors shown in this catalog may not reflect actual color of product.

RENÉ OF PARIS, NORIKO, NORIKO COLLECTION, HYBRANT ROOT, AND HYBRANT SHADES are trademarks or registered trademarks of Aderans Hair Goods, Inc. and/or Aderans Co., Ltd. in the United States and other countries.

Distributed by  
**RENÉ of PARIS**  
division of Aderans Hair Goods, Inc.

9135 Independence Avenue, Chatsworth, CA 91311 USA

Toll Free: 800.353.7363 • Fax: 424.239.1451

FRONT COVER Style Shown: Emerson in Cappucino, Angelica PM in Macademia-LR

BACK COVER Style Shown: Reese PM in Mochaccino-R

[www.reneofparis.com](http://www.reneofparis.com)

**FOLLOW US ON:**



NORIKO CATALOG 2016/2017



2106029