

Henry Margu

“SEE WHY
THE DIFFERENCE
IS BEAUTIFUL”

FASHION
EDITION

FABULOUS
NEW STYLES
INSIDE

HM
Henry Margu



Henry Margu

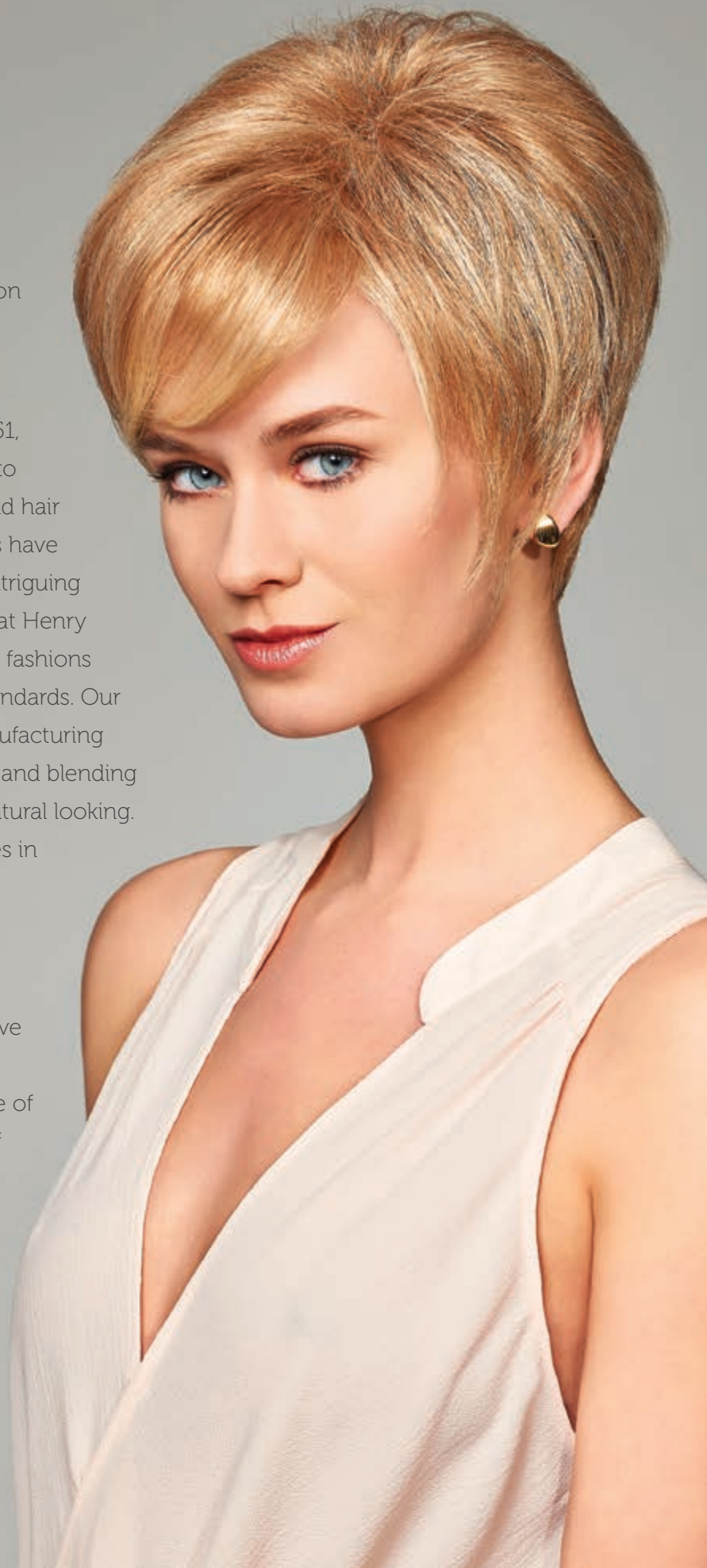
Trend-setting styles, cutting-edge colorations, incomparable quality and relentless dedication to our customers have secured our position as a leader of the "alternative" hair industry.

Since Henry Margu first came on the scene in 1951, family ownership has developed the company into one of the most well respected brands of wigs and hair fashions. Over these many years, innovative ideas have helped us create some of the most unique and intriguing styles and colors in the industry. The design staff at Henry Margu has not only focused on creating exquisite fashions but also achieving the highest possible quality standards. Our superior craftsmanship utilizes sophisticated manufacturing techniques including specialized fiber processing and blending methods making styles more manageable and natural looking. Constantly researching the most current advances in technology, we continually strive to create lighter weight wigs with exceptional comfort for endless hours of wearing pleasure.

With 64 years of experience, many milestones have been recognized at Henry Margu with still many more to come. Most importantly, the driving force of our efforts is for one purpose ... the satisfaction of our customers!

With countless styles and our wide range of salon inspired colors, Henry Margu is creating freedom of choice to help women look and feel their best!

Browse the following pages of the collection and see for yourself why **the difference is beautiful™** with Henry Margu wigs.



4

Highlighted Styles

28

Rooted Styles

36

Naturally Yours

46

Naturally Yours Professional

52

Hair Accents

54

Mane Attraction

56

Bands & Bangs

57

Petite Solutions

58

Accessories

59

Cap Construction

60

Colors

62

Style Index

Highlighted Styles

In today's world, it's all about the hair and when a woman's hair looks good, she feels good. Henry Margu is helping women exude confidence and beauty with a variety of fashion forward and sophisticated styles available in more than 45 salon inspired highlighted colors.

The beautiful highlighted colorations developed by Henry Margu add a touch of realism to any style. Using the most up-to-date coloring trends, the highlighting is designed to accentuate each individual style creating the most natural appearance for every wig. Exclusive fiber blending techniques also enhance the colors as well as making the styles more manageable.

Many of the Highlighted Styles are designed with our open cap Featherlight construction creating super lightweight wigs that are exceptionally cool and more comfortable to wear.

View the pages of Highlighted Styles and see the variety of hair fashions designed to help women look their best.

Henry Margu...
The difference is beautiful!™





Paulina

Ref#: 2468

Color shown: 31H

Colors: 1H, 1BH, 4H, 5H, 6H, 7H, 8H, 8/14H, 8/27/33H, 12AH, 12H, 14H, 16H, 24H18, 26H, 27AH, 27/26H, 29H, 31H, 33H, 88H, 130H, 131H, 132H, 614H, 626H, 2400H, 2500H, 2600H

Weight: 4.15 ounces

Bang: 11" Eartab: 10" Nape: 10"

Top: 9 - 13" Sides: 10¾ - 11½"

Back: 10 - 11½" Overall length: 13¼"

Lace front





◀ Megan

Ref#: 2459

Color shown: 27GR

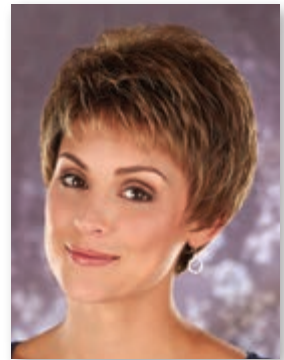
Colors: 1BH, 4GR, 4H, 5H, 6H, 7H, 8H, 8/14H, 8/27/33H, 12AH, 12GR, 12H, 14H, 16H, 24H18, 26GR, 26H, 27AH, 27GR, 27/26H, 29H, 30H, 31H, 33H, 37, 38, 43, 44, 51, 56, 60, 88H, 130H, 131GR, 131H, 132H, 614GR, 614H, 626H, 2400H, 2500H, 2600H

Weight: 1.65 ounces

Bang: 2½" Eartab: 2¾" Nape: 1¾"

Top: 2¼ - 3¼" Sides: 1¾ - 3¼" Back: 1¾ - 3¼"

Lace front



Bonnie ▶

Ref#: 2458

Color shown: 8/27/33H

Colors: 1BH, 4GR, 4H, 5H, 6H, 7H, 8H, 8/14H, 8/27/33H, 12AH, 12GR, 12H, 14H, 16H, 24H18, 26GR, 26H, 27AH, 27GR, 27/26H, 29H, 30H, 31H, 33H, 37, 38, 43, 44, 51, 56, 60, 88H, 130H, 131GR, 131H, 132H, 614GR, 614H, 626H, 2400H, 2500H, 2600H

Weight: 1.65 ounces

Bang: 3½" Eartab: 2½" Nape: 2"

Top: 2 - 3½" Sides: 2 - 2½" Back: 2 - 2½"

Petite Average headsize

Lace front



Rianna

Ref#: 2463

Color shown: 14H

Colors: 1BH, 4H, 4GR, 5H, 6H, 7H, 8H, 8/14H, 8/27/33H, 12AH, 12GR, 12H, 14H, 16H, 24H18, 26H, 26GR, 27AH, 27GR, 27/26H, 29H, 31H, 33H, 37, 38, 43, 44, 51, 56, 60, 88H, 130H, 131GR, 132H, 614GR, 614H, 626H, 2400H, 2500H, 2600H

Weight: 2.25 ounces

Bang: 4½" Eartab: 3"

Nape: 2" Top: 2½ - 4"

Sides: 2 - 3" Back: 2 - 3"

Lace front



Delilah ▶

Ref#: 2717

Color shown: 12AH

Colors: 1H, 1BH, 4H, 6H, 8H, 12AH, 12H, 14H, 16H, 24H18, 26H, 27AH, 30H, 33H, 88H, 130H, 131H, 614H, 2400H, 2500H, 2600H

Weight: 7.90 ounces

Bang: 5½" Eartab: 18" Nape: 18" Top: 5½ - 16"

Sides: 12 - 18" Back: 16 - 18" Overall length: 26"



◀ Isabelle

Ref#: 4000

Color shown: 27/26H

Colors: 1H, 1BH, 4H, 5H, 6H, 7H, 8H, 8/14H, 8/27/33H, 12AH, 12H, 14H, 16H, 24H18, 26H, 27AH, 27/26H, 29H, 30H, 31H, 33H, 37, 38, 43, 44, 51, 56, 60, 88H, 130H, 131H, 132H, 614H, 626H, 2400H, 2500H, 2600H

Weight: 4.05 ounces

Bang: 12½" Eartab: 9" Nape: 5½" Top: 3 - 14"

Sides: 8 - 12" Back: 5½ - 12" Overall length: 15"

Full lace front



Celine

Ref#: 2457

Color shown: 131H

Colors: 1H, 1BH, 4H, 5H, 6H, 7H, 8H, 8/14H, 8/27/33H, 12AH, 12H, 14H, 16H, 24H18, 26H, 27AH, 27/26H, 29H, 30H, 31H, 33H, 88H, 130H, 131H, 132H, 614H, 626H, 2400H, 2500H, 2600H

Weight: 5.40 ounces

Bang: 3" Eartab: 15" Nape: 13"

Top: 12 - 17" Sides: 15 - 17"

Back: 13 - 17"

Overall Length: 19"

Monofilament crown area.





◀ Vanity

Ref#: 2709

Color shown: 2400H

Colors: 1H, 1BH, 4H, 6H, 8H, 12AH, 12H, 14H, 16H, 24H18, 26H, 27AH, 30H, 33H, 88H, 130H, 131H, 614H, 2400H, 2500H, 2600H

Weight: 6.35 ounces

Bang: 5" Eartab: 16" Nape: 18" Top: 5½" - 14"

Sides: 16" Back: 16 - 18" Overall length: 26"



Brenda ▶

Ref#: 2426

Color shown: 27/26H

Colors: 1H, 1BH, 4GR, 4H, 5H, 6H, 7H, 8H, 8/14H, 8/27/33H, 12AH, 12GR, 12H, 14H, 14/24H, 16H, 18/22H, 24H18, 26GR, 26H, 27AH, 27GR, 27/26H, 29H, 30H, 31H, 33H, 37, 38H, 43, 44H, 51H, 56, 60H, 88H, 130H, 131GR, 131H, 132H, 614GR, 614H, 626H, 2400H, 2500H, 2600H

Weight: 2.00 ounces

Bang: 4½" Eartab: 5" Nape: 3½" Top: 4 - 6"

Sides: 3½ - 5" Back: 3½ - 5" Overall length: 11½"

Petite headsize



Amber

Ref#: 2461

Color shown: 7H

Colors: 1H, 1BH, 4H, 4GR, 5H, 6H, 7H, 8H, 8/14H, 8/27/33H, 12AH, 12GR, 12H, 14H, 16H, 24H18, 26H, 26GR, 27AH, 27GR, 27/26H, 29H, 31H, 33H, 37, 38, 43, 44, 51, 56, 60, 88H, 130H, 131GR, 132H, 614GR, 614H, 626H, 2400H, 2500H, 2600H

Weight: 2.00 ounces

Bang: 2½" Eartab: 3" Nape: 2"

Top: 2 - 4" Sides: 2 - 3"

Back: 2 - 3"





◀ Felicia

Ref#: 2452

Color shown: 7H

Colors: 1H, 1BH, 4GR, 4H, 5H, 6H, 7H, 8H, 8/14H, 8/27/33H, 12AH, 12GR, 12H, 14H, 16H, 24H18, 26GR, 26H, 27AH, 27GR, 27/26H, 29H, 30H, 31H, 33H, 88H, 130H, 131GR, 131H, 132H, 614GR, 614H, 626H, 2400H, 2500H, 2600H

Weight: 4.20 ounces

Bang: 5" Eartab: 9" Nape: 7"

Top: 6 - 9" Sides: 8 - 9" Back: 7 - 9"

Overall Length: 13"



Ella ▶

Ref#: 2453

Color shown: 8/27/33H

Colors: 1H, 1BH, 4GR, 4H, 5H, 6H, 7H, 8H, 8/14H, 8/27/33H, 12AH, 12GR, 12H, 14H, 16H, 24H18, 26GR, 26H, 27AH, 27GR, 27/26H, 29H, 30H, 31H, 33H, 88H, 130H, 131GR, 131H, 132H, 614GR, 614H, 626H, 2400H, 2500H, 2600H

Weight: 2.90 ounces

Bang: 4" Eartab: 5½" Nape: 3"

Top: 4 - 7" Sides: 5½" Back: 4 - 5½"

Overall Length: 9½"



Ruby

Ref#: 2467

Color shown: 26H

Colors: 1H, 1BH, 4H, 4GR, 5H, 6H, 7H, 8H, 8/14H, 8/27/33H, 12AH, 12GR, 12H, 14H, 16H, 24H18, 26H, 26GR, 27AH, 27GR, 27/26H, 29H, 31H, 33H, 37, 38H, 43, 44H, 51H, 56, 60H, 88H, 130H, 131GR, 132H, 614GR, 614H, 626H, 2400H, 2500H, 2600H

Weight: 1.90 ounces

Bang: 3" Eartab: 2½"

Nape: 2¼" **Top:** 2 - 3"

Sides: 2¼ - 2½"

Back: 2¼ - 2½"



Leah▶

Ref#: 2414

Color shown: 88H

Colors: 1H, 1BH, 4H, 5H, 6H, 7H, 8H, 8/14H, 8/27/33H, 12AH, 12H, 14H, 14/24H, 16H, 18/22H, 24H18, 26H, 27AH, 27/26H, 29H, 30H, 31H, 33H, 37, 38, 43, 44, 51, 56, 60, 88H, 130H, 131H, 132H, 614H, 626H, 2400H, 2500H, 2600H

Weight: 1.75 ounces

Bang: 3¾" Eartab: 3¼" Nape: 2¼"

Top: 2¾ - 3¾" Sides: 2¼ - 3¼" Back: 2¼ - 3¼"

Petite headsize



◀ Savannah

Ref#: 2437

Color shown: 27/26H

Colors: 1H, 1BH, 4GR, 4H, 5H, 6H, 7H, 8H, 8/14H, 8/27/33H, 12AH, 12GR, 12H, 14H, 14/24H, 16H, 18/22H, 24H18, 26GR, 26H, 27AH, 27GR, 27/26H, 29H, 30H, 31H, 33H, 88H, 130H, 131GR, 131H, 132H, 614GR, 614H, 626H, 2400H, 2500H, 2600H

Weight: 4.00 ounces

Bang: 6" Eartab: 11" Nape: 10"

Top: 5 - 10½" Sides: 9 - 11" Back: 9½ - 11"

Overall length: 16"





◀ Liz

Ref#: 2460

Color shown: 14H

Colors: 1H, 1BH, 4GR, 4H, 5H, 6H, 7H, 8H, 8/14H, 8/27/33H, 12AH, 12GR, 12H, 14H, 16H, 24H18, 26GR, 26H, 27AH, 27GR, 27/26H, 29H, 30H, 31H, 33H, 37, 38, 43, 44, 51, 56, 60, 88H, 130H, 131GR, 131H, 132H, 614GR, 614H, 626H, 2400H, 2500H, 2600H

Weight: 1.75 ounces

Bang: 2" Eartab: 2½" Nape: 2½"

Top: 2 - 3" Sides: 1¾ - 2½" Back: 1¾ - 2½"

Petite Average headsize



Jayde ▶

Ref#: 2455

Color shown: 31H

Colors: 1H, 1BH, 4GR, 4H, 5H, 6H, 7H, 8H, 8/14H, 8/27/33H, 12AH, 12GR, 12H, 14H, 16H, 24H18, 26GR, 26H, 27AH, 27GR, 27/26H, 29H, 30H, 31H, 33H, 88H, 130H, 131GR, 131H, 132H, 614GR, 614H, 626H, 2400H, 2500H, 2600H

Weight: 3.40 ounces

Bang: 4½" Eartab: 6½" Nape: 3"

Top: 9½" Sides: 6 - 8" Back: 2¾ - 8"

Overall length: 10½"



Lily

Ref#: 2433

Color shown: 14H

Colors: 1H, 1BH, 4H, 5H, 6H, 7H, 8H, 8/14H, 8/27/33H, 12AH, 12H, 14H, 16H, 24H18, 26H, 27AH, 27/26H, 29H, 30H, 31H, 33H, 88H, 130H, 131H, 132H, 614H, 626H, 2400H, 2500H, 2600H

Weight: 2.25 ounces

Bang: 4" Eartab: 4½" Nape: 2"

Top: 4 - 6" Sides: 4½ - 6"

Back: 3 - 4"



Desiree ▶

Ref#: 2710

Color shown: 33H

Colors: 1H, 1BH, 4H, 6H, 8H, 12AH, 12H, 14H, 16H, 24H18, 26H, 27AH, 30H, 33H, 88H, 130H, 131H, 614H, 2400H, 2500H, 2600H

Weight: 7.10 ounces

Bang: 9½" Eartab: 18½" Nape: 27"

Top: 5½ - 14" Sides: 16½ - 20" Back: 16½ - 27"

Overall length: 35"



◀ Alysa

Ref#: 2712

Color shown: 8H

Colors: 1H, 1BH, 4H, 6H, 8H, 12AH, 12H, 14H, 16H, 24H18, 26H, 27AH, 30H, 33H, 88H, 130H, 131H, 614H, 2400H, 2500H, 2600H

Weight: 5.75 ounces

Bang: 5½" Eartab: 12" Nape: 12"

Top: 5¼ - 12" Sides: 12" Back: 12"

Overall length: 20"



Sonya

Ref#: 2365

Color shown: 6H

Colors: 1H, 1BH, 4H, 5H, 6H, 7H, 8H, 8/14H, 8/27/33H, 12AH, 12H, 14H, 14/24H, 16H, 18/22H, 24H18, 26H, 27AH, 27/26H, 29H, 30H, 31H, 33H, 88H, 130H, 131H, 132H, 614H, 626H, 2400H, 2500H, 2600H

Weight: 2.45 ounces

Bang: 4 $\frac{3}{4}$ " **Eartab:** 3 $\frac{3}{4}$ "

Nape: 4 $\frac{3}{4}$ " **Top:** 3 $\frac{3}{4}$ " - 4 $\frac{3}{4}$ "

Sides: 3 $\frac{3}{4}$ " **Back:** 3 $\frac{3}{4}$ " - 4 $\frac{1}{4}$ "



◀ Bethany

Ref#: 2444

Color shown: 31H

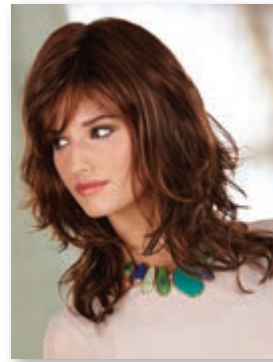
Colors: 1H, 1BH, 4GR, 4H, 5H, 6H, 7H, 8H, 8/14H, 8/27/33H, 12AH, 12GR, 12H, 14H, 16H, 24H18, 26GR, 26H, 27AH, 27GR, 27/26H, 29H, 30H, 31H, 33H, 88H, 130H, 131GR, 131H, 132H, 614GR, 614H, 626H, 2400H, 2500H, 2600H

Weight: 4.05 ounces

Bang: 5" Eartab: 11" Nape: 11½"

Top: 11" Sides: 11" Back: 11"

Overall Length: 18"



Tess ▶

Ref#: 2442

Color shown: 26GR

Colors: 1H, 1BH, 4GR, 4H, 5H, 6H, 7H, 8H, 8/14H, 8/27/33H, 12AH, 12GR, 12H, 14H, 14/24H, 16H, 18/22H, 24H18, 26GR, 26H, 27AH, 27GR, 27/26H, 29H, 30H, 31H, 33H, 37, 38H, 43, 44H, 51H, 56, 60H, 88H, 130H, 131GR, 131H, 132H, 614GR, 614H, 626H, 2400H, 2500H, 2600H

Weight: 2.10 ounces

Bang: 5" Eartab: 3" Nape: 3" Top: 3½ - 4¼"

Sides: 2¼ - 3" Back: 2¼ - 3"



◀ Debi

Ref#: 2403

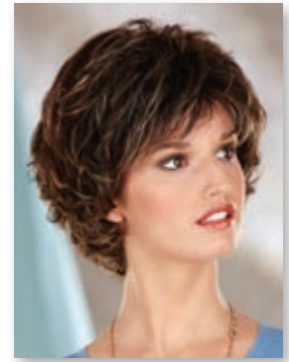
Color shown: 626H

Colors: 1H, 1BH, 4H, 5H, 6H, 7H, 8H, 8/14H, 8/27/33H, 12AH, 12H, 14H, 14/24H, 16H, 18/22H, 24H18, 26H, 27AH, 27/26H, 29H, 30H, 31H, 33H, 37, 38, 43, 44, 51, 56, 60, 88H, 130H, 131H, 132H, 614H, 626H, 2400H, 2500H, 2600H

Weight: 1.95 ounces

Bang: 4" Eartab: 4" Nape: 3"

Top: 3 - 4½" Sides: 3 - 4" Back: 3 - 4"



Nikki ▶

Ref#: 2393

Color shown: 6H

Colors: 1H, 1BH, 4GR, 4H, 5H, 6H, 7H, 8H, 8/14H, 8/27/33H, 12AH, 12GR, 12H, 14H, 14/24H, 16H, 18/22H, 24H18, 26GR, 26H, 27AH, 27GR, 27/26H, 29H, 30H, 31H, 33H, 37, 38, 43, 44, 51, 56, 60, 88H, 130H, 131GR, 131H, 132H, 614GR, 614H, 626H, 2400H, 2500H, 2600H

Weight: 2.25 ounces

Bang: 4½" Eartab: 4½" Nape: 4½"

Top: 3½ - 5½" Sides: 4 - 5" Back: 4 - 5"

Overall length: 12½"



Bailey

Ref#: 2439

Color shown:

8/27/33H

Colors: 1H, 1BH, 4GR,
4H, 5H, 6H, 7H, 8H,
8/14H, 8/27/33H, 12AH,
12GR, 12H, 14H, 14/24H,
16H, 18/22H, 24H18, 26GR,
26H, 27AH, 27GR, 27/26H, 29H, 30H,
31H, 33H, 37, 38H, 43, 44H, 51H, 56,
60H, 88H, 130H, 131GR, 131H, 132H,
614GR, 614H, 626H, 2400H,
2500H, 2600H

Weight: 2.25 ounces

Bang: 4¼" Eartab: 3½" Nape: 3"

Top: 3¾" Sides: 3 - 3½"

Back: 3 - 3½"



Annette

Ref#: 2369

Color shown: 24H18

Colors: 1H, 1BH, 4GR, 4H, 5H, 6H, 7H, 8H, 8/14H, 8/27/33H, 12AH, 12GR, 12H, 14H, 14/24H, 16H, 18/22H, 24H18, 26GR, 26H, 27AH, 27GR, 27/26H, 29H, 30H, 31H, 33H, 37, 38H, 43, 44H, 51H, 56, 60H, 88H, 130H, 131GR, 131H, 132H, 614GR, 614H, 626H, 2400H, 2500H, 2600H

Weight: 1.95 ounces

Bang: 3½" **Eartab:** 2½" **Nape:** 2"

Top: 2½ - 5" **Sides:** 2½ - 3"

Back: 2 - 3½"



Holly ▶

Ref#: 2445

Color shown: 132H

Colors: 1H, 1BH, 4GR, 4H, 5H, 6H, 7H, 8H, 8/14H, 8/27/33H, 12AH, 12GR, 12H, 14H, 16H, 24H18, 26GR, 26H, 27AH, 27GR, 27/26H, 29H, 30H, 31H, 33H, 37, 38, 43, 44, 51, 56, 60, 88H, 130H, 131GR, 131H, 132H, 614GR, 614H, 626H, 2400H, 2500H, 2600H

Weight: 2.75 ounces

Bang: 5½" **Eartab:** 5" **Nape:** 2" **Top:** 8"

Sides: 5½" **Back:** 5" **Overall Length:** 9½"



◀ Danielle

Ref#: 2409

Color shown: 626H

Colors: 1H, 1BH, 4H, 5H, 6H, 7H, 8H, 8/14H, 8/27/33H, 12AH, 12H, 14H, 14/24H, 16H, 18/22H, 24H18, 26H, 27AH, 27/26H, 29H, 30H, 31H, 33H, 88H, 130H, 131H, 132H, 614H, 626H, 2400H, 2500H, 2600H

Weight: 3.25 ounces

Bang: 4½" **Eartab:** 7" **Nape:** 7" **Top:** 3½ - 6¼"

Sides: 6¼ - 7¾" **Back:** 5½ - 7¾" **Overall length:** 14½"



Gabby

Ref#: 2450

Color shown:

8/27/33H

Colors: 1H, 1BH,
4GR, 4H, 5H, 6H, 7H,
8H, 8/14H, 8/27/33H, 12AH,
12GR, 12H, 14H, 16H, 24H18,
26GR, 26H, 27AH, 27GR, 27/26H,
29H, 30H, 31H, 33H, 88H, 130H,
131GR, 131H, 132H, 614GR, 614H,
626H, 2400H, 2500H, 2600H

Weight: 2.30 ounces

Bang: 4½"

Eartab: 4½" Nape: 3½"

Top: 4 - 5¾"

Sides: 3½ - 4½"

Back: 3½ - 4½"





◀ Chloe

Ref#: 2434

Color shown: 7H

Colors: 1H, 1BH, 4GR, 4H, 5H, 6H, 7H, 8H, 8/14H, 8/27/33H, 12AH, 12GR, 12H, 14H, 14/24H, 16H, 18/22H, 24H18, 26GR, 26H, 27AH, 27GR, 27/26H, 29H, 30H, 31H, 33H, 37, 38, 43, 44, 51, 56, 60, 88H, 130H, 131GR, 131H, 132H, 614GR, 614H, 626H, 2400H, 2500H, 2600H

Weight: 2.35 ounces

Bang: 4¾" Eartab: 4" Nape: 5" Top: 4¾" - 5¼"

Sides: 3½" - 5" Back: 3½" - 4" Overall length: 13"



Audrey ▶

Ref#: 2430

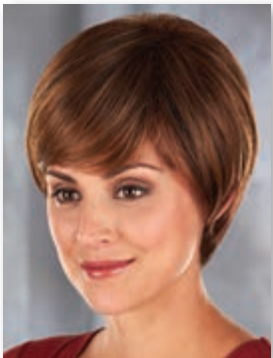
Color shown: 31H

Colors: 1H, 1BH, 4GR, 4H, 5H, 6H, 7H, 8H, 8/14H, 8/27/33H, 12AH, 12GR, 12H, 14H, 14/24H, 16H, 18/22H, 24H18, 26GR, 26H, 27AH, 27GR, 27/26H, 29H, 30H, 31H, 33H, 37, 38H, 43, 44H, 51H, 56, 60H, 88H, 130H, 131GR, 131H, 132H, 614GR, 614H, 626H, 2400H, 2500H, 2600H

Weight: 2.25 ounces

Bang: 4½" Eartab: 3" Nape: 2" Top: 4½" - 6"

Sides: 2 - 3" Back: 2 - 5½"





◀ Kayla

Ref#: 2351

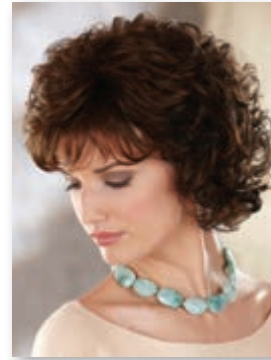
Color shown: 5H

Colors: 1H, 1BH, 4H, 5H, 6H, 7H, 8H, 8/14H, 8/27/33H, 12AH, 12H, 14H, 14/24H, 16H, 18/22H, 24H18, 26H, 27AH, 27/26H, 29H, 30H, 31H, 33H, 37, 38, 43, 44, 51, 56, 60, 88H, 130H, 131H, 132H, 614H, 626H, 2400H, 2500H, 2600H

Weight: 2.95 ounces

Bang: 4" **Eartab:** 5" **Nape:** 5" **Top:** 4 - 4½"

Sides: 4½ - 5½" **Back:** 4½ - 5½"



Elite ▶

Ref#: 2443

Color shown: 27/26H

Colors: 1H, 1BH, 4GR, 4H, 5H, 6H, 7H, 8H, 8/14H, 8/27/33H, 12AH, 12GR, 12H, 14H, 14/24H, 16H, 18/22H, 24H18, 26GR, 26H, 27AH, 27GR, 27/26H, 29H, 30H, 31H, 33H, 37, 38H, 43, 44H, 51H, 56, 60H, 88H, 130H, 131GR, 131H, 132H, 614GR, 614H, 626H, 2400H, 2500H, 2600H

Weight: 1.95 ounces

Bang: 3¾" **Eartab:** 3¼" **Nape:** 2" **Top:** 2¾ - 3¼"

Sides: 2 - 3¼" **Back:** 2 - 3¼"



Faith ▶

Ref#: 2441

Color shown: 614GR

Colors: 1H, 1BH, 4GR, 4H, 5H, 6H, 7H, 8H, 8/14H, 8/27/33H, 12AH, 12GR, 12H, 14H, 14/24, 16H, 18/22, 24H18, 26GR, 26H, 27AH, 27GR, 27/26H, 29H, 30H, 31H, 33H, 37, 38, 43, 44, 51, 56, 60, 88H, 130H, 131GR, 131H, 132H, 614GR, 614H, 626H, 2400H, 2500H, 2600H

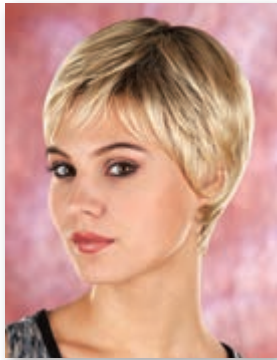
Weight: 1.65 ounces

Bang: 3" Eartab: 2½" Nape: 2¼"

Top: 1¾ - 3½" Sides: 2½" Back: 1¾ - 3½"

Petite headsize

Monofilament crown area



◀ Yasmin

Ref#: 2301

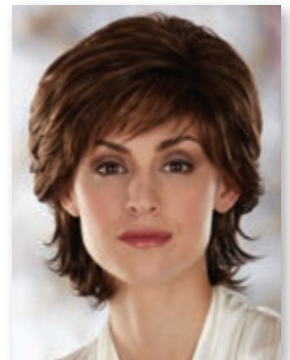
Color shown: 8/14H

Colors: 1H, 1BH, 4H, 5H, 6H, 7H, 8H, 8/14H, 8/27/33H, 12AH, 12H, 14H, 14/24, 16H, 18/22, 24H18, 26H, 27AH, 27/26H, 29H, 30H, 31H, 33H, 88H, 130H, 131H, 132H, 614H, 626H, 2400H, 2500H, 2600H

Weight: 3.05 ounces

Bang: 4¼" Eartab: 4¼" Nape: 5" Top: 3½ - 5¾"

Sides: 4¼ - 5" Back: 3½ - 5" Overall length: 12"



Rooted Styles

Enabling a woman to easily achieve any hairstyle and to change her appearance at a moment's notice to look her absolute best is the objective at Henry Margu. Whether smooth and sleek or a trendy textured cut, our Rooted Styles offer a choice for every lifestyle.

Henry Margu makes use of a unique coloring method to enhance many styles with our exclusive rooted colorations. These beautiful colors create the effect of having a darker root color with lighter tips and offer an amazingly natural appearance with 40 colors to choose from.

Innovative design such as our Featherlight cap offers the lightest, most comfortable, secure fit available and best of all, making the wigs cooler than ever and allowing for hours of wearing ease.

Check out our Rooted Styles on the following pages.

Henry Margu...
The difference is beautiful!™



Toni

Ref#: 2392

Color shown: 131GR

Colors: 1BR, 2R, 4GR, 4R, 6/30R, 8R, 8/14R, 8/26R, 8/27R, 12, 12GR, 12R, 12/26R, 14, 16/22R, 16/613R, 22R, 24R, 24R18, 26GR, 26R, 27, 27GR, 27R, 29R, 33, 33/27R, 37, 38R, 43, 44, 51R, 56, 60R, 88R, 130R, 131GR, 614GR, 2500

Weight: 1.75 ounces

Bang: 4" Eartab: 3½"

Nape: 2¾" **Top:** 2¾ - 4"

Sides: 2½ - 3½"

Back: 2½ - 3½"



Maya ▶

Ref#: 2449

Color shown: 26GR

Colors: 1BR, 2R, 4GR, 4R, 6/30R, 8R, 8/14R, 8/26R, 8/27R, 12, 12GR, 12R, 12/26R, 14, 16/22R, 16/613R, 22R, 24R, 24R18, 26GR, 26R, 27, 27GR, 27R, 29R, 33, 33/27R, 37, 38R, 43, 44, 51R, 56, 60R, 88R, 130R, 131GR, 614GR, 2500

Weight: 2.20 ounces

Bang: 5¾" Eartab: 2¾" Nape: 2"

Top: 4 - 6" Sides: 3 - 4" Back: 2 - 4"



◀ Ann

Ref#: 2419

Color shown: 24R18

Colors: 1BR, 2R, 4R, 6/30R, 8R, 8/14R, 8/26R, 8/27R, 12, 12R, 12/26R, 14, 16/22R, 16/613R, 22R, 24R, 24R18, 26R, 27, 27R, 29R, 33, 33/27R, 37, 38R, 43, 44, 51R, 56, 60R, 88R, 130R, 2500

Weight: 1.80 ounces

Bang: 3¾" Eartab: 3¼" Nape: 2¾"

Top: 3¾" Sides: 3¼ - 3¾" Back: 3¼ - 3¾"



Jenna ▶

Ref#: 2356

Color shown: 29R

Colors: 1BR, 2R, 4R, 6/30R, 8R, 8/14R, 8/26R, 8/27R, 12, 12R, 12/26R, 14, 16/22R, 16/613R, 22R, 24R, 24R18, 26R, 27, 27R, 29R, 33, 33/27R, 88R, 130R, 2500

Weight: 4.95 ounces

Bang: 5¼" Eartab: 11½" Nape: 13¼" Top: 5¼ - 7"

Sides: 8½ - 11½" Back: 8½ - 11½" Overall length: 18"



◀ Bianca

Ref#: 2307

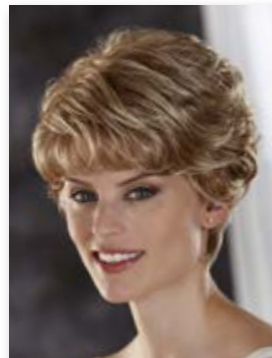
Color shown: 88R

Colors: 1BR, 2R, 4R, 6/30R, 8R, 8/14R, 8/26R, 8/27R, 12, 12R, 12/26R, 14, 16/22R, 16/613R, 22R, 24R, 24R18, 26R, 27, 27R, 29R, 33, 33/27R, 37, 38R, 43, 44, 51R, 56, 60R, 88R, 130R, 2500

Weight: 2.15 ounces

Bang: 4" Eartab: 4" Nape: 2½"

Top: 3½ - 4½" Sides: 2 - 4½" Back: 2 - 4"



Sophia ▶

Ref#: 2254

Color shown: 8/26R

Colors: 1BR, 2R, 4R, 6/30R, 8R, 8/14R, 8/26R, 8/27R, 12, 12R, 12/26R, 14, 16/22R, 16/613R, 22R, 24R, 24R18, 26R, 27, 27R, 29R, 33, 33/27R, 37, 38R, 43, 44, 51R, 56, 60R, 88R, 130R, 2500

Weight: 2.65 ounces

Bang: 4¼" Eartab: 5" Nape: 3½"

Top: 4¼" Sides: 3½ - 5" Back: 3½ - 5"



◀ Teresa

Ref#: 2366

Color shown: 33/27R

Colors: 1BR, 2R, 4GR, 4R, 6/30R, 8R, 8/14R, 8/26R, 8/27R, 12, 12GR, 12R, 12/26R, 14, 16/22R, 16/613R, 22R, 24R, 24R18, 26GR, 26R, 27, 27GR, 27R, 29R, 33, 33/27R, 37, 38R, 43, 44, 51R, 56, 60R, 88R, 130R, 131GR, 614GR, 2500

Weight: 1.75 ounces

Bang: 3½" Eartab: 3" Nape: 2"

Top: 2 - 3½" Sides: 2 - 3" Back: 2 - 3"





◀ Tia

Ref#: 2332

Color shown: 8/26R

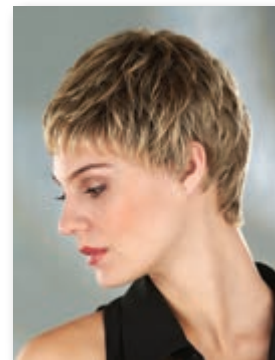
Colors: 1BR, 2R, 4R, 6/30R, 8R, 8/14R, 8/26R, 8/27R, 12, 12R, 12/26R, 14, 16/22R, 16/613R, 22R, 24R, 24R18, 26R, 27, 27R, 29R, 33, 33/27R, 37, 38R, 43, 44, 51R, 56, 60R, 88R, 130R, 2500

Weight: 1.60 ounces

Bang: 2¼" **Eartab:** 2¼" **Nape:** 1¾"

Top: 2¼" **Sides:** 1¾ - 2½" **Back:** 1¾ - 2¼"

Petite headsize



Sammi ▶

Ref#: 2306

Color shown: 27GR

Colors: 1BR, 2R, 4GR, 4R, 6/30R, 8R, 8/14R, 8/26R, 8/27R, 12, 12GR, 12R, 12/26R, 14, 16/22R, 16/613R, 22R, 24R, 24R18, 26GR, 26R, 27, 27GR, 27R, 29R, 33, 33/27R, 37, 38R, 43, 44, 51R, 56, 60R, 88R, 130R, 131GR, 614GR, 2500

Weight: 2.00 ounces

Bang: 4" **Eartab:** 3½" **Nape:** 2½"

Top: 2¾ - 4" **Sides:** 2½ - 4" **Back:** 2½ - 4"



Vogue ▶

Ref#: 2214

Color shown: 6/30R

Colors: 1BR, 2R, 4R, 6/30R, 8R, 8/14R, 8/26R, 8/27R, 12, 12R, 12/26R, 14, 16/22R, 16/613R, 22R, 24R, 24R18, 26R, 27, 27R, 29R, 33, 33/27R, 88R, 130R, 2500

Weight: 2.75 ounces

Bang: 5¼" Eartab: 6¼" Nape: 5¾" Top: 5¼"

Sides: 5¼ - 6¼" Back: 5¼ - 6¼"



◀ Olivia

Ref#: 2379

Color shown: 8/26R

Colors: 1BR, 2R, 4R, 6/30R, 8R, 8/14R, 8/26R, 8/27R, 12, 12R, 12/26R, 14, 16/22R, 16/613R, 22R, 24R, 24R18, 26R, 27, 27R, 29R, 33, 33/27R, 37, 38R, 43, 44, 51R, 56, 60R, 88R, 130R, 2500

Weight: 1.75 ounces

Bang: 3½" Eartab: 3¼" Nape: 2¼" Top: 2½ - 3¼"

Sides: 2¼ - 3¼" Back: 2½ - 3¼"



Marcia ▶

Ref#: 2421

Color shown: 8/14R

Colors: 1BR, 2R, 4R, 6/30R, 8R, 8/14R, 8/26R, 8/27R, 12, 12R, 12/26R, 14, 16/22R, 16/613R, 22R, 24R, 24R18, 26R, 27, 27R, 29R, 33, 33/27R, 37, 38R, 43, 44, 51R, 56, 60R, 88R, 130R, 2500

Weight: 2.00 ounces

Bang: 3¼" Eartab: 2½" Nape: 1¾" Top: 2¾ - 3¼"

Sides: 2¼ - 2¾" Back: 2¼ - 2¾"



◀ Krista

Ref#: 2300

Color shown: 88R

Colors: 1BR, 2R, 4R, 6/30R, 8R, 8/14R, 8/26R, 8/27R, 12, 12R, 12/26R, 14, 16/22R, 16/613R, 22R, 24R, 24R18, 26R, 27, 27R, 29R, 33, 33/27R, 37, 38R, 43, 44, 51R, 56, 60R, 88R, 130R, 2500

Weight: 2.15 ounces

Bang: 3" Eartab: 2½" Nape: 2" Top: 2½ - 3"

Sides: 2½ - 3" Back: 2 - 3"



Naturally Yours®

It's a new era for today's sophisticated fashion forward women looking for quality, comfort and style. With advancements in production techniques that have allowed for countless improvements in every detail, Henry Margu has created a unique collection of wigs for every lifestyle.

Designed for those who prefer the best, **Naturally Yours®** offers ready-to-wear styles with a monofilament top that have the versatility to be customized to fit a woman's personal needs. From chic bobs to long, luscious layers, the monofilament top is hand-knotted with individual fibers to simulate realistic hair growth and allowing for multi-directional styling.

Browse the following pages to see the variety of Naturally Yours that will help every woman radiate beauty.

For the most natural appearance and the ultimate in comfort...it's Naturally Yours.



Fiona

Ref#: 4749

Color shown: 7H

Colors: 1BH, 4GR, 4H, 5H, 6H,
7H, 8H, 8/14H, 8/27/33H, 12AH,
12GR, 12H, 14H, 16H, 24H18,
26GR, 26H, 27AH, 27GR,
27/26H, 29H, 30H, 31H,
33H, 88H, 130H, 131GR,
131H, 132H, 614GR, 614H,
626H, 2400H, 2500H,
2600H

Weight: 3.30 ounces

Bang: 7" Eartab: 8½"

Nape: 6" Top: 5¼ - 9"

Sides: 7½ - 8½"

Back: 6 - 8½"

Overall length: 13"

Monofilament top with
lace front





◀Ava

Ref#: 4742

Color shown: 626H

Colors: 1BH, 4H, 5H, 6H, 7H, 8H, 8/14H, 8/27/33H, 12AH, 12H, 14H, 16H, 24H18, 26H, 27AH, 27/26H, 29H, 30H, 31H, 33H, 88H, 130H, 131H, 132H, 614H, 626H, 2400H, 2500H, 2600H

Weight: 5.65 ounces

Bang: 11½" Eartab: 11½" Nape: 15½" Top: 11¼ - 11¾"

Sides: 11½ - 14½" Back: 12½ - 15½" Overall length: 20"

Monofilament top with full lace front

Charlotte ▶

Ref#: 4750

Color shown: 6H

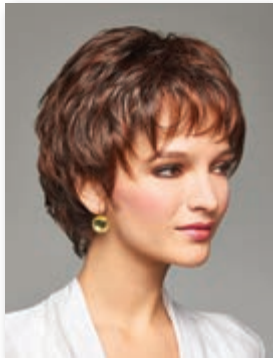
Colors: 1BH, 4H, 4GR, 5H, 6H, 7H, 8H, 8/14H, 8/27/33H, 12AH, 12GR, 12H, 14H, 16H, 24H18, 26H, 26GR, 27AH, 27GR, 27/26H, 29H, 31H, 33H, 37, 38, 43, 44, 51, 56, 60, 88H, 130H, 131GR, 132H, 614GR, 614H, 626H, 2400H, 2500H, 2600H

Weight: 1.95 ounces

Bang: 3½" Eartab: 3" Nape: 3" Top: 2½ - 4"

Sides: 2¼ - 3" Back: 2¼ - 3"

Monofilament top with lace front



Meredith▶

Ref#: 4735

Color shown: 8/27/33H

Colors: 1BH, 4GR, 4H, 5H, 6H, 7H, 8H, 8/14H, 8/27/33H, 12AH, 12GR, 12H, 14H, 16H, 24H18, 26GR, 26H, 27AH, 27GR, 27/26H, 29H, 30H, 31H, 33H, 37, 38, 43, 44, 51, 56, 60, 88H, 130H, 131GR, 131H, 132H, 614GR, 614H, 626H, 2400H, 2500H, 2600H

Weight: 2.50 ounces

Bang: 4½" Eartab: 4½" Nape: 4½" Top: 3½" - 5½"

Sides: 4 - 5" Back: 4 - 5" Overall length: 12½"

Monofilament top

Medical application on front hairline and eartabs



◀ Sabrina

Ref#: 4731

Color shown: 24H18

Colors: 1BH, 4GR, 4H, 5H, 6H, 7H, 8H, 8/14H, 8/27/33H, 12AH, 12GR, 12H, 14H, 16H, 24H18, 26GR, 26H, 27AH, 27GR, 27/26H, 29H, 30H, 31H, 33H, 37, 38H, 43, 44H, 51H, 56, 60H, 88H, 130H, 131GR, 131H, 132H, 614GR, 614H, 626H, 2400H, 2500H, 2600H

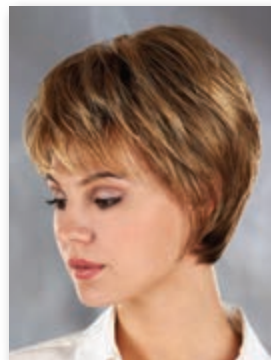
Weight: 1.80 ounces

Bang: 3½" Eartab: 4" Nape: 2½" Top: 2¾" - 4¾"

Sides: 2½" - 4" Back: 2½" - 4"

Petite headsize

Monofilament top



Kelly ▶

Ref#: 4745

Color shown: 27/26H

Colors: 1BH, 4GR, 4H, 5H, 6H, 7H, 8H, 8/14H, 8/27/33H, 12AH, 12GR, 12H, 14H, 16H, 24H18, 26GR, 26H, 27AH, 27GR, 27/26H, 29H, 30H, 31H, 33H, 37, 38H, 43, 44H, 51H, 56, 60H, 88H, 130H, 131GR, 131H, 132H, 614GR, 614H, 626H, 2400H, 2500H, 2600H

Weight: 2.20 ounces

Bang: 4" Eartab: 6½" Nape: 1½" Top: 3 - 8"

Sides: 4 - 6½" Back: 1½ - 6½" Overall Length: 8"

Petite Average headsize

Monofilament top



◀ Autumn

Ref#: 4748

Color shown: 5H

Colors: 1BH, 4GR, 4H, 5H, 6H, 7H, 8H, 8/14H, 8/27/33H, 12AH, 12GR, 12H, 14H, 16H, 24H18, 26GR, 26H, 27AH, 27GR, 27/26H, 29H, 30H, 31H, 33H, 88H, 130H, 131GR, 131H, 132H, 614GR, 614H, 626H, 2400H, 2500H, 2600H

Weight: 3.25 ounces

Bang: 7" Eartab: 7¼" Nape: 9" Top: 6 - 9"

Sides: 6 - 9" Back: 6 - 9" Overall Length: 14½"

Monofilament top with lace front



Monica

Ref#: 4751

Color shown: 26GR

Colors: 1BH, 4H, 4GR, 5H, 6H, 7H, 8H, 8/14H, 8/27/33H, 12AH, 12GR, 12H, 14H, 16H, 24H18, 26H, 26GR, 27AH, 27GR, 27/26H, 29H, 31H, 33H, 37, 38, 43, 44, 51, 56, 60, 88H, 130H, 131GR, 132H, 614GR, 614H, 626H, 2400H, 2500H, 2600H

Weight: 1.80 ounces

Bang: 2 $\frac{3}{4}$ " Eartab: 2 $\frac{1}{4}$ " Nape: 1 $\frac{3}{4}$ " Top: 2 - 3 $\frac{1}{4}$ "

Sides: 2 $\frac{1}{4}$ - 2 $\frac{3}{4}$ " Back: 1 $\frac{3}{4}$ - 2 $\frac{3}{4}$ "

Monofilament top with lace front





◀ Madison

Ref#: 4730

Color shown: 26H

Colors: 1BH, 4GR, 4H, 5H, 6H, 7H, 8H, 8/14H, 8/27/33H, 12AH, 12GR, 12H, 14H, 16H, 24H18, 26GR, 26H, 27AH, 27GR, 27/26H, 29H, 30H, 31H, 33H, 37, 38H, 43, 44H, 51H, 56, 60H, 88H, 130H, 131GR, 131H, 132H, 614GR, 614H, 626H, 2400H, 2500H, 2600H

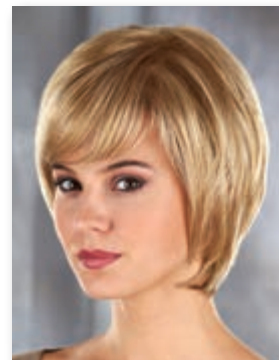
Weight: 2.15 ounces

Bang: 4½" Eartab: 5" Nape: 3½" Top: 4 - 6"

Sides: 3½ - 5" Back: 3½ - 5" Overall length: 11½"

Monofilament top

Medical application on front hairline and eartabs



Hannah ▶

Ref#: 4752

Color shown: 7H

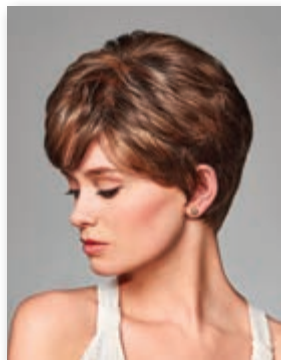
Colors: 1BH, 4H, 4GR, 5H, 6H, 7H, 8H, 8/14H, 8/27/33H, 12AH, 12GR, 12H, 14H, 16H, 24H18, 26H, 26GR, 27AH, 27GR, 27/26H, 29H, 31H, 33H, 37, 38H, 43, 44H, 51H, 56, 60H, 88H, 130H, 131GR, 132H, 614GR, 614H, 626H, 2400H, 2500H, 2600H

Weight: 1.70 ounces

Bang: 3¾" Eartab: 2¾" Nape: 1¾" Top: 2¾ - 3¾"

Sides: 2¼ - 2¾" Back: 1¾ - 3¼"

Monofilament top with lace front



Becky ▶

Ref#: 4739

Color shown: 29H

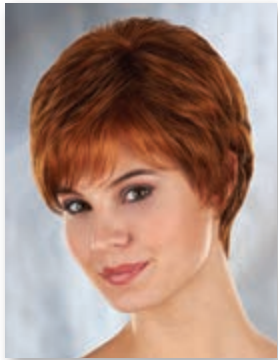
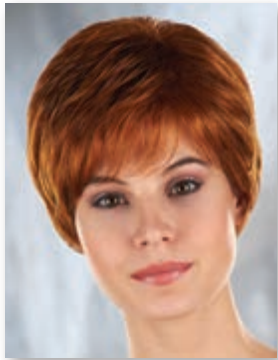
Colors: 1BH, 4GR, 4H, 5H, 6H, 7H, 8H, 8/14H, 8/27/33H, 12AH, 12GR, 12H, 14H, 16H, 24H18, 26GR, 26H, 27AH, 27GR, 27/26H, 29H, 30H, 31H, 33H, 37, 38H, 43, 44H, 51H, 56, 60H, 88H, 130H, 131GR, 131H, 132H, 614GR, 614H, 626H, 2400H, 2500H, 2600H

Weight: 1.80 ounces

Bang: 4" Eartab: 2¾" Nape: 1¾" Top: 2 - 3½"

Sides: 1¾ - 2¾" Back: 1¾ - 3¼"

Monofilament top



◀ Abigail

Ref#: 4729

Color shown: 27/26H

Colors: 1BH, 4H, 5H, 6H, 7H, 8H, 8/14H, 8/27/33H, 12AH, 12H, 14H, 16H, 24H18, 26H, 27AH, 27/26H, 29H, 30H, 31H, 33H, 88H, 130H, 131H, 132H, 614H, 626H, 2400H, 2500H, 2600H

Weight: 3.95 ounces

Bang: 4½" Eartab: 8½" Nape: 10" Top: 4½ - 9"

Sides: 9 - 10" Back: 9 - 10¾" Overall length: 14"

Monofilament top

Medical application on front hairline and eartabs



Tyler

Ref#: 4728

Color shown:
8/27R

Colors: 1BR,
2R, 4GR, 4R,
6/30R, 8R, 8/14R,
8/26R, 8/27R, 12, 12GR,
12R, 12/26R, 14, 16/22R,
16/613R, 22R, 24R, 24R18,
26GR, 26R, 27, 27GR, 27R, 29R, 33,
33/27R, 37, 38R, 43, 44, 51R, 56, 60R,
88R, 130R, 131GR, 614GR, 2500

Weight: 2.05 ounces

Bang: 4" Eartab: 3½" Nape: 2¾" Top: 4"

Sides: 2½ - 3½" Back: 2½ - 3½"

Monofilament top

Medical application on
front hairline





◀ Pamela

Ref#: 4733

Color shown: 88R

Colors: 1BR, 2R, 4R, 6/30R, 8R, 8/14R, 8/26R, 8/27R, 12, 12R, 12/26R, 14, 16/22R, 16/613R, 22R, 24R, 24R18, 26R, 27, 27R, 29R, 33, 33/27R, 37, 38R, 43, 44, 51R, 56, 60R, 88R, 130R, 2500

Weight: 1.90 ounces

Bang: 3¼" Eartab: 2½" Nape: 2" Top: 3¼"

Sides: 2½ - 3" Back: 2½ - 3"

Petite headsize

Monofilament top



Emma ▶

Ref#: 4727

Color shown: 8/26R

Colors: 1BR, 2R, 4GR, 4R, 6/30R, 8R, 8/14R, 8/26R, 8/27R, 12, 12GR, 12R, 12/26R, 14, 16/22R, 16/613R, 22R, 24R, 24R18, 26GR, 26R, 27, 27GR, 27R, 29R, 33, 33/27R, 37, 38R, 43, 44, 51R, 56, 60R, 88R, 130R, 131GR, 614GR, 2500

Weight: 1.80 ounces

Bang: 3¾" Eartab: 3¼" Nape: 2" Top: 3¼ - 3¾"

Sides: 2 - 3¼" Back: 2 - 3¼"

Monofilament top

Medical application on front hairline



Naturally Yours®

Professional

Experience the best Henry Margu has to offer. These innovative and artistically hand crafted styles offer exceptional comfort while looking amazingly realistic.

Modern in design, the **Naturally Yours® Professional** collection has been developed for the most discerning consumers that desire only the best. The meticulously hand-knotted stretch lace cap and monofilament top are uniquely designed to allow for endless hours of wearing comfort making this collection the most exclusive in the market today. See for yourself the unique features of our exclusive cap design below.

Check out the luxurious **Naturally Yours® Professional** styles on the following pages.

For the most natural appearance and the ultimate in comfort... it's Naturally Yours®.

Exclusive Cap Design

- 1 Double monofilament for added comfort
- 2 Swiss stretch lace allows a comfortable fit on a variety of head sizes
- 3 Cap size adjustment
- 4 Medical application on eartabs and front hairline to comfortably secure wig
- 5 Natural under knotted lace front hairline



Nora

Ref#: 4515

Color shown: 8/27/33H

Colors: 1BH, 4H, 5H, 6H, 7H, 8H, 8/14H, 8/27/33H, 12AH, 12H, 14H, 16H, 24H18, 26H, 27AH, 27/26H, 29H, 31H, 33H, 37, 38, 43, 44, 51, 56, 60, 88H, 130H, 132H, 614H, 626H, 2400H, 2500H, 2600H

Weight: 3.15 ounces

Bang: 10 - 10¼" Eartab: 6½"

Nape: 2½" Top: 6½ - 9¼"

Sides: 6½ - 8¼" Back: 8 - 8¼"

Overall length: 11¾"

100% hand-knotted stretch cap with monofilament top with lace front

Medical application on eartabs



Visage ▶

Ref#: 4512

Color shown: 8/27/33H

Colors: 1BH, 4H, 5H, 6H, 7H, 8H, 8/14H, 8/27/33H, 12AH, 12H, 14H, 16H, 24H18, 26H, 27AH, 27/26H, 29H, 30H, 31H, 33H, 88H, 130H, 131H, 132H, 614H, 626H, 2400H, 2500H, 2600H

Weight: 4.55 ounces

Bang: 9½" Eartab: 10" Nape: 11" Top: 6½ - 10"

Sides: 10" Back: 10 - 11" Overall length: 17½"

100% hand-knotted stretch cap with monofilament top
Medical application on front hairline and eartabs



◀ Supra

Ref#: 4505

Color shown: 8/14H

Colors: 1BH, 4H, 5H, 6H, 7H, 8H, 8/14H, 8/27/33H, 12AH, 12H, 14H, 16H, 24H18, 26H, 27AH, 27/26H, 29H, 30H, 31H, 33H, 37, 38, 43, 44, 51, 56, 60, 88H, 130H, 131H, 132H, 614H, 626H, 2400H, 2500H, 2600H

Weight: 2.85 ounces

Bang: 7½" Eartab: 7½" Nape: 3½" Top: 7¼ - 7¾"

Sides: 5½ - 7½" Back: 3 - 6½" Overall length: 10¾"

100% hand-knotted stretch cap with monofilament top
Medical application on front hairline and eartabs



Marquis▶

Ref#: 4507

Color shown: 7H

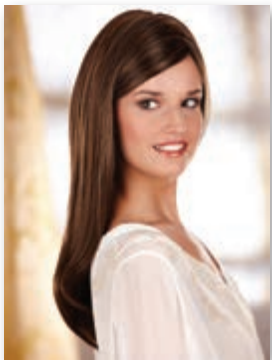
Colors: 1BH, 4H, 5H, 6H, 7H, 8H, 8/14H, 8/27/33H, 12AH, 12H, 14H, 16H, 24H18, 26H, 27AH, 27/26H, 29H, 30H, 31H, 33H, 88H, 130H, 131H, 132H, 614H, 626H, 2400H, 2500H, 2600H

Weight: 5.20 ounces

Bang: 14" Eartab: 14¾" Nape: 13½" Top: 13¾ - 14¼"

Sides: 14½ - 15" Back: 13½ - 14¾" Overall length: 20"

100% hand-knotted stretch cap with monofilament top
Medical application on front hairline and eartabs



◀ Trish

Ref#: 4513

Color shown: 7H

Colors: 1BH, 4H, 5H, 6H, 7H, 8H, 8/14H, 8/27/33H, 12AH, 12H, 14H, 16H, 24H18, 26H, 27AH, 27/26H, 29H, 30H, 31H, 33H, 37, 38, 43, 44, 51, 56, 60, 88H, 130H, 131H, 132H, 614H, 626H, 2400H, 2500H, 2600H

Weight: 1.75 ounces

Bang: 3" Eartab: 2½" Nape: 2½" Top: 2½ - 3"

Sides: 2½ - 3" Back: 2½ - 3"

Petite Average headsize

Monofilament top with lace front and hand-knotted back area



Perfection ▶

Ref#: 4511

Color shown: 132H

Colors: 1BH, 4H, 5H, 6H, 7H, 8H, 8/14H, 8/27/33H, 12AH, 12H, 14H, 16H, 24H18, 26H, 27AH, 27/26H, 29H, 30H, 31H, 33H, 88H, 130H, 131H, 132H, 614H, 626H, 2400H, 2500H, 2600H

Weight: 4.90 ounces

Bang: 5¼" Eartab: 10" Nape: 13¼" Top: 5 - 10"

Sides: 10 - 11½" Back: 10½ - 12½"

Overall Length: 20"

100% hand-knotted stretch cap with monofilament top
Medical application on front hairline and eartabs



◀ Lori

Ref#: 4514

Color shown: 8/14H

Colors: 1BH, 4H, 5H, 6H, 7H, 8H, 8/14H, 8/27/33H, 12AH, 12H, 14H, 16H, 24H18, 26H, 27AH, 27/26H, 29H, 30H, 31H, 33H, 37, 38, 43, 44, 51, 56, 60, 88H, 130H, 131H, 132H, 614H, 626H, 2400H, 2500H, 2600H

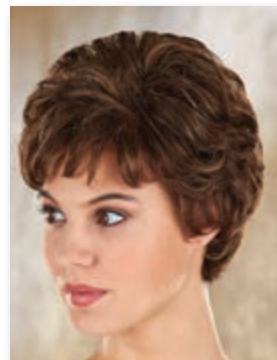
Weight: 1.65 ounces

Bang: 2½" Eartab: 2½" Nape: 2¼" Top: 2½ - 3"

Sides: 2¼ - 3¾" Back: 2¼ - 3¾"

Petite Average headsize

Monofilament top with lace front and hand-knotted back area



Utopia

Ref#: 4509

Color shown: 2600H

Colors: 1BH, 4H, 5H, 6H, 7H, 8H, 8/14H, 8/27/33H, 12AH, 12H, 14H, 16H, 24H18, 26H, 27AH, 27/26H, 29H, 30H, 31H, 33H, 88H, 130H, 131H, 132H, 614H, 626H, 2400H, 2500H, 2600H

Weight: 3.40 ounces

Bang: 4½" Eartab: 8" Nape: 3"

Top: 4½ - 10" Sides: 7¾ - 8¼"

Back: 7¾ - 8¼"

Overall length: 14"

Petite Average headsize

100% hand-knotted stretch

cap with monofilament top

Medical application on front
hairline and eartabs



Hair Accents®

- Designed for comfort, **Hair Accents®** beautifully blended hair is permanently attached to a 100% cotton baseball cap creating a ready-to-wear hair fashion alternative with absolutely no styling needed. All Hair Accents styles are available in 12 naturally highlighted colors as shown on page 53 in both a black and beige colored baseball cap.



Classic Hat Black

Ref#: 8226

Color shown: 12H

Length: 8"



Long Hat Beige

Ref#: 8229

Color shown: 6H

Length: 14"

Long Hat Black ►

Ref#: 8227

Color shown: 30H

Length: 14"

◀ Classic Hat Beige

Ref#: 8228

Color shown: 16H

Length: 8"



Classic Hat & Long Hat are available in colors:

1BH, 4H, 6H, 8H, 12AH, 12H, 14H, 16H, 24H18, 27AH, 30H, 614H



Shorty Hat Black

Ref#: 8225

Color shown: 14H

Length: 5½"

Shorty Hat Beige ►

Ref#: 8230

Color shown: 27AH

Length: 5½"

Shorty Hat is available in colors:

1BH, 4H, 6H, 8H, 12AH, 12H,
14H, 16H, 24H18, 27AH, 30H,
38, 44, 51, 60, 614H



1BH

4H

6H

8H

12AH

24H18



12H

14H

16H

614H

27AH

30H



38

44

51

60

Colors 38, 44,
51 & 60 are
ONLY available
in **Shorty Hat**.

Cap size adjustment to easily and comfortably fit all head sizes.

Mane Attraction®

- Now it's possible for a quick fashion fix with **Mane Attraction®** hairpieces from Henry Margu. Amazingly easy to wear, these beautiful hair add-ons are ultra comfortable and complement any lifestyle.



Eclipse ▲

Ref#: 8090

Color shown: 24H18

Overall length: 26½"

3/4 cap hairpiece



Breezy ▲

Ref#: 8089

Color shown: 12AH

Overall length: 24"

3/4 cap hairpiece

Sunny ►

Ref#: 8094

Color shown: 27AH

Overall length: 13½"

3/4 cap hairpiece



All **Mane Attraction®** hairpieces on pages 54 – 55 are available in colors:

1H, 1BH, 4H, 6H, 8H, 12AH, 12H, 14H, 16H, 24H18, 26H, 27AH, 27/26H, 29H, 30H, 33H, 88H, 130H, 131H, 614H, 2500H

Sassy & Charm are ALSO available in grey colors: 38, 44, 51, 56, 60



Temptation

Ref#: 8224

Color shown: 88H

Overall length: 24"

Quick Combs® butterfly
comb hairpiece



Charm

Ref#: 8220

Color shown: 88H

Overall length: 7"

Quick Combs® butterfly
comb hairpiece



Whirlwind

Ref#: 8223

Color shown: 8H

Overall length: 15 - 16"

Quick Combs® butterfly
comb hairpiece



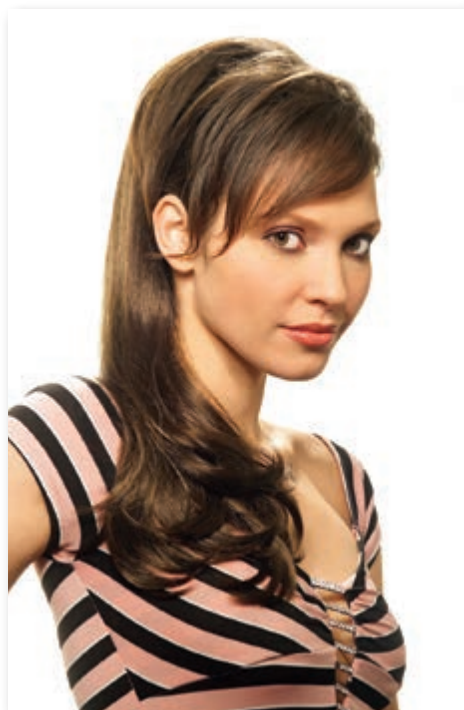
Sassy

Ref#: 8213

Color shown: 26H

Overall length: 8½"

Quick Combs® interlocking
comb hairpiece



Attitude

Ref#: 8215

Color shown: 8H

Overall length: 22"

Quick Combs® interlocking comb
hairpiece



Sensation

Ref#: 8216

Color shown: 14H

Overall length: 23"

Quick Combs® interlocking
comb hairpiece

Bands & Bangs



Classic Band

Ref#: 2323

Color shown: 30H

Weight: 3.55 ounces
Overall length: 14"
2½ inch permanently
attached black headband
Inset shown with 228 Bang

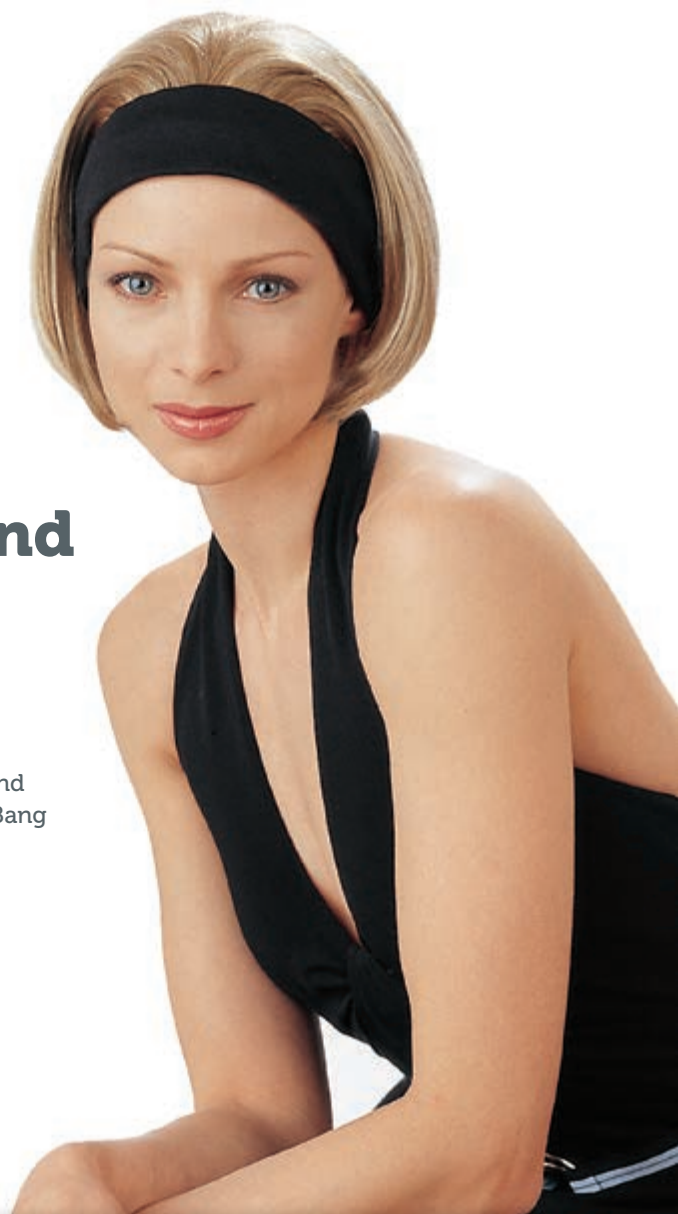


Page Band

Ref#: 2291

Color shown: 26H

Weight: 3.45 ounces
Overall length: 11"
2½ inch permanently
attached black headband
Inset shown with 228 Bang



Bang **Ref#:** 228 Overall length: 3½ - 4½"



Color: 130H

Velcro allows Bang to easily attach to Band style and other headwear.



Color: 27AH

Velvet material is comforting to skin.



Color: 51

Page Band, Classic Band & Bang are available in colors:

1BH, 4H, 6H, 8H, 12AH, 12H, 14H, 16H, 18/22H, 24H18, 26H, 27AH, 27/26H, 30H, 33H, 38, 44, 51, 56, 60, 130H, 131H, 614H, 2500H

Petite Solutions®

- Fashionable styles that comfortably fit small head sizes, **Petite Solutions®** is designed exclusively for children and ultra-petite women.



Jordan ▲

Ref#: 1786

Color shown: 12AH

Colors: 1B, 4H, 8H, 12AH, 12H, 14, 16H, 26H, 130H

Weight: 4.25 ounces

Bang: 5" Eartab: 14" Nape: 8"

Top: 5 - 16" Sides: 12 - 14" Back: 8 - 14"

Overall length: 16"

Monofilament top



Lauren ▲

Ref#: 1785

Color shown: 14

Colors: 1B, 4H, 8H, 12AH, 12H, 14, 16H, 26H, 130H

Weight: 3.00 ounces

Bang: 5" Eartab: 7½" Nape: 2½"

Top: 5½ - 10" Sides: 5½ - 8½" Back: 5½ - 8½"

Overall length: 11"

Monofilament top

Accessories

Wig Care Products

Cleanse, Finish, Revitalize & Shape are specifically formulated to enhance and prolong the life of our exceptional wigs and hairpieces.

Henry Margu wig care products are available in cases of 12 eight ounce bottles.



Color Rings

Individual fiber swatches aid in choosing the most suitable color for your clients and are available in our Rooted and Highlighted colorations.



Comfort Cap

Mesh wig liner designed to keep the wearer cool and comfortable while preventing movement and slipping for a more secure fit.

Available in Black, Light Brown, Beige & Grey and packaged a dozen per color.



Shelby Accessory Mannequin

Enhancing the presentation of short and medium length wigs and hairpieces, Shelby's natural skin tone and soft makeup will accentuate any hair color.

At 17 inches, Shelby is produced in a unique flexible PVC material that will resist scratching and chipping and will keep your display looking amazing for many years to come.



Wig Stands

Folding wig stands are ideal for storing and/or drying wigs. Made of sturdy plastic or metal, these convenient stands are easy to assemble and lay flat for traveling ease.

Cap Construction



Traditional

Traditional cap construction features a fine net material in the top area with an open cap in the back. Weftings attached to stretch elastic lace make the open back creating better ventilation to keep the head

cooler. A Traditional cap or a wig utilizing components of this type of cap construction is often referred to as a "machine-made" cap.



Open Cap/Featherlight

Open cap is commonly referred to as a "capless" wig due to the lack of net material used in the top as on a Traditional cap and as a result making the wig better ventilated throughout. The entire cap is produced with weftings attached

to thin stretch elastic lace. Our exclusive ultra thin weftings used in the Featherlight cap create super lightweight wigs that are exceptionally cool and comfortable to wear.



Lace Front

A lace front wig has a hairline made of a fine lace mesh in which each hair is individually hand knotted. The lace varies in width from $\frac{1}{4}$ to $1\frac{1}{2}$ inches. The lace typically extends across the entire front hairline but on occasion may extend from ear to

ear. The benefit of a lace front wig is an amazingly realistic hairline that appears as if the hair is growing directly out of the scalp and allows the fiber in front to be styled off the face in any direction. The neutral color of the lace mesh takes on the skin tone of the wearer making the hairline more natural looking and virtually invisible. A Lace Front can be utilized on wigs of any type cap construction.



Hand Knotted

A Hand-Knotted wig is also referred to as a Hand-Tied wig. Hand-Tied wigs are made with a soft stretch lace base and 100% of the fiber is individually hand knotted onto the lace base. This type of cap is lightweight and exceptionally

comfortable as the lace feels soft against the head. Hand-Tied wigs are produced with a Mono Top making them extremely natural looking as well and making this type of wig the most luxurious available.



Monofilament Top

Monofilament (Mono) is an extremely sheer mesh used to make a transparent base that creates a realistic looking scalp area and is then hand-knotted with individual fibers to simulate the appearance of natural hair growth.

The fiber in a Monofilament Top

(Mono Top) allows for multidirectional styling and parting the hair on the left, right or center creating amazing styling versatility and resulting in an extremely natural looking appearance. A Mono Top feels smoother against the scalp than a Traditional or Open Cap and more comfortable as a result. Often a Mono Top will have a polyurethane strip in the front of the mono area to help create a more secure fit.



Monofilament Top with Lace Front

Mono Top with Lace Front wigs are produced the same as a Mono Top wig but utilizing a Lace Front as well to create the most natural front hairline in conjunction with the realistic characteristics of a

Mono Top. This allows for amazing off the face styling versatility as well as the flexibility to part hair on the left or right or in the center to achieve multiple styling variations. These wigs offer the most natural and realistic appearance due to the combination of the Mono and Lace Front.



Monofilament Part

A Monofilament Part (Mono Part) cap contains a wide Mono Part area on a machine-made cap and allows the wearer to style a conventional part or a more fashionable zigzag part for the most realistic appearance.

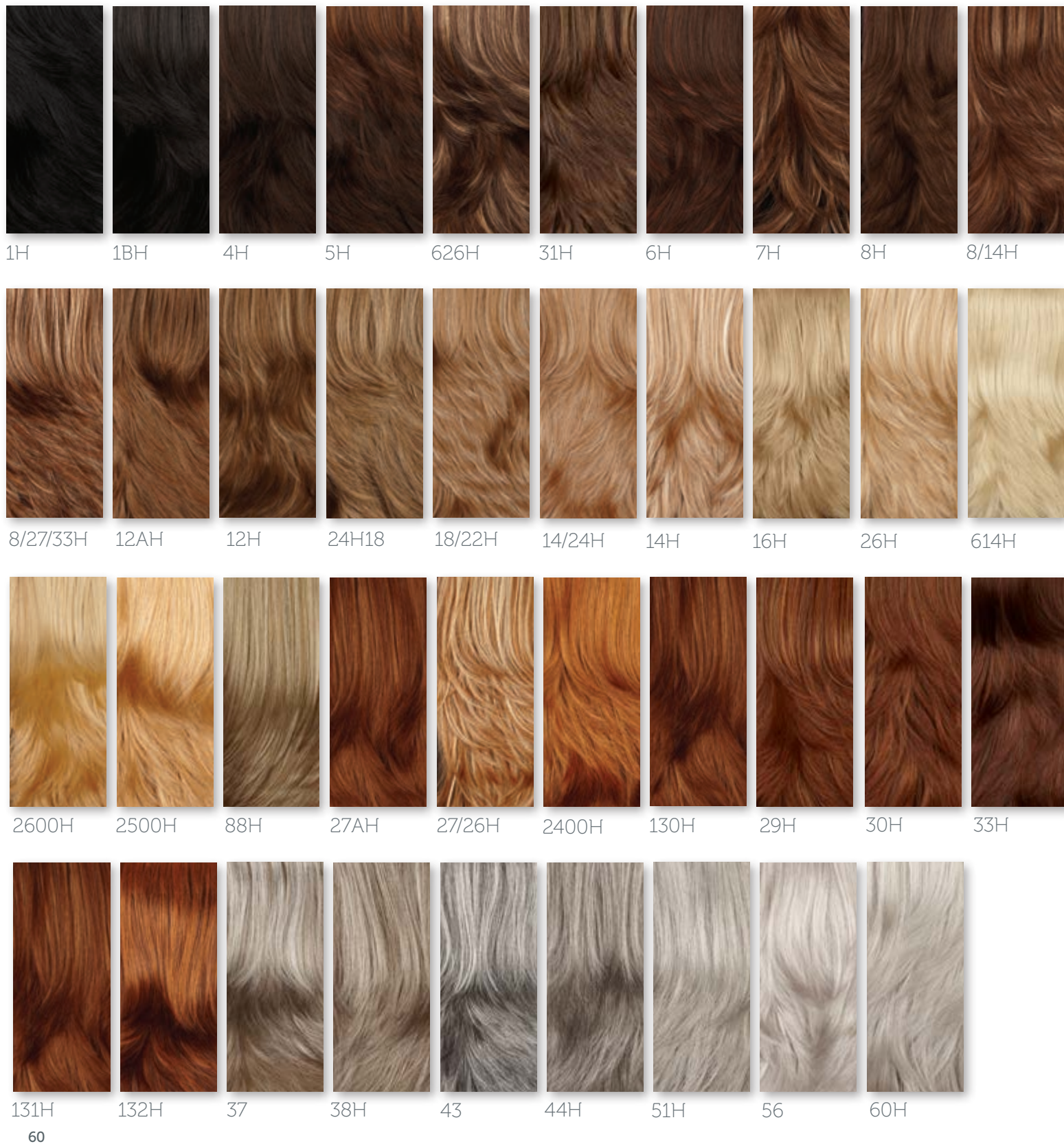


Monofilament Crown

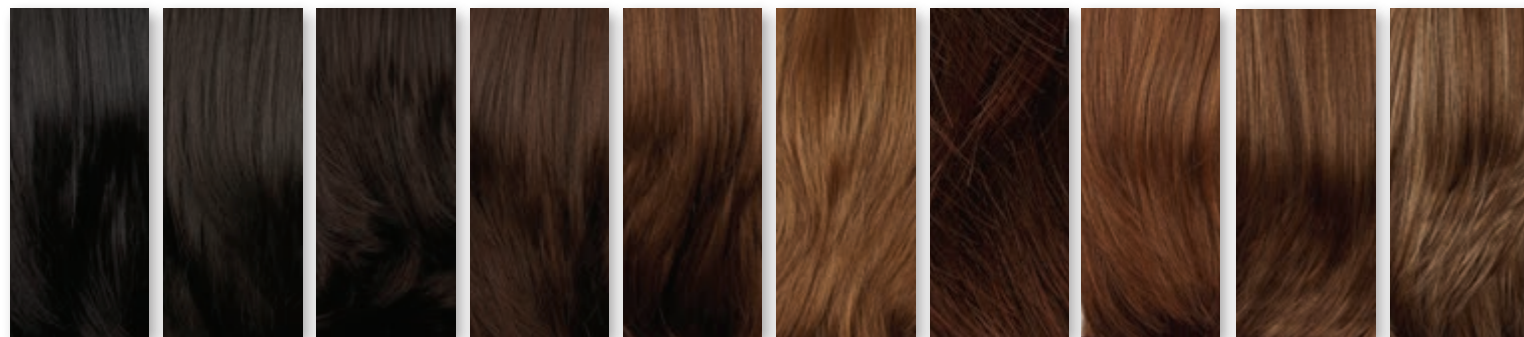
A Monofilament Crown (Mono Crown) cap contains a Mono area in the top area of a machine-made cap. This allows for the fiber in this area to have a more natural and realistic appearance and is often used on shorter wig styles in the crown or in the center area of a style that is flatter and with less volume in the top.

Swatches

Highlighted colors



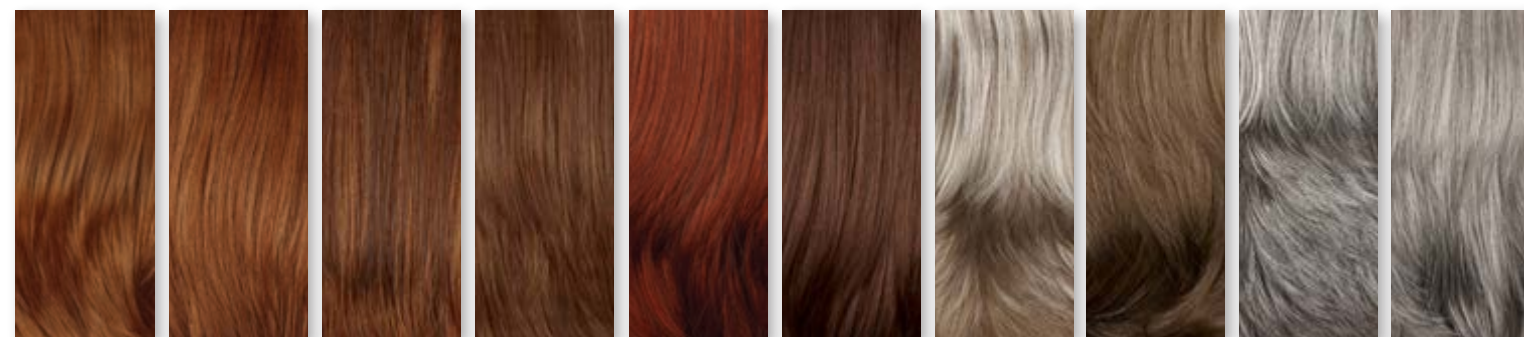
Rooted colors



1BR 2R 4R 8R 12R 12 6/30R 8/27R 8/14R 8/26R



24R18 12/26R 22R 14 88R 24R 16/22R 26R 16/613R 2500



27 27R 29R 33/27R 130R 33 37 38R 43 44



51R 56 60R

Gradient colors



4GR 12GR 26GR 614GR 27GR 131GR

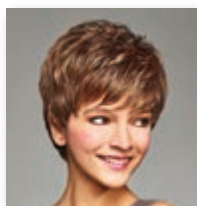
Style Index



Abigail 43



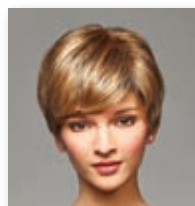
Alysa 17



Amber 11



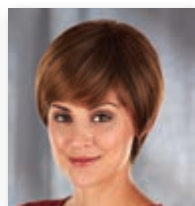
Ann 30



Annette 22



Attitude 55



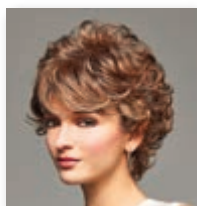
Audrey 25



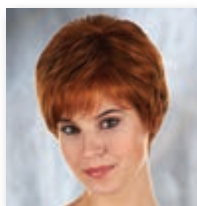
Autumn 40



Ava 38



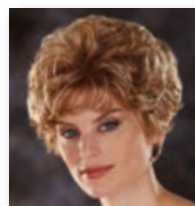
Bailey 21



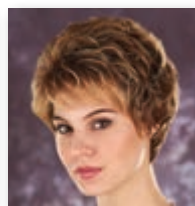
Becky 43



Bethany 19



Bianca 31



Bonnie 6



Breezy 54



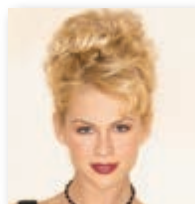
Brenda 10



Celine 9



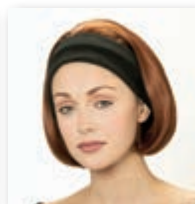
Charlotte 38



Charm 55



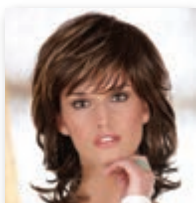
Chloe 25



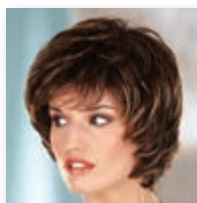
Classic Band 56



Classic Hat 52



Danielle 23



Debi 20



Delilah 8



Desiree 17



Eclipse 54



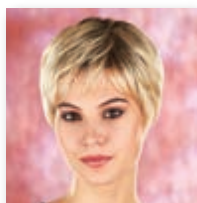
Elite 26



Ella 12



Emma 45



Faith 27



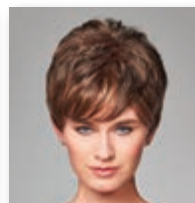
Felicia 12



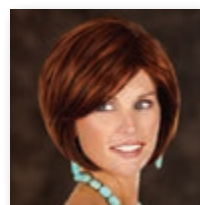
Fiona 37



Gabby 24



Hannah 42



Holly 23



Isabelle 8



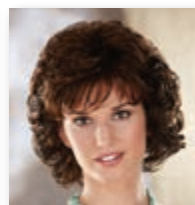
Jayde 15



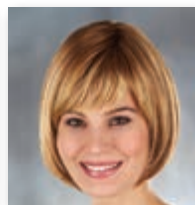
Jenna 31



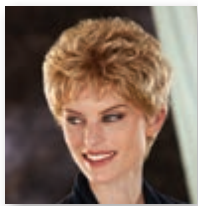
Jordan 57



Kayla 26



Kelly 40



Krista 35



Lauren 57



Leah 14



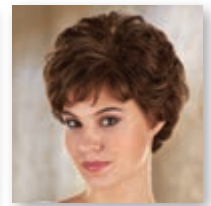
Lily 16



Liz 15



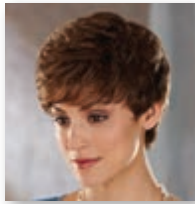
Long Hat 52



Lori 50



Madison 42



Marcia 35



Marquis 49



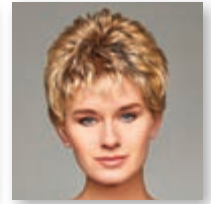
Maya 30



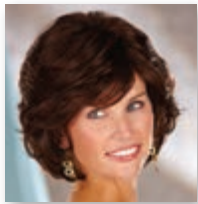
Megan 6



Meredith 39



Monica 41



Nikki 20



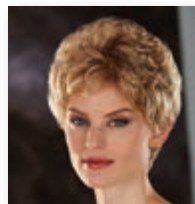
Nora 47



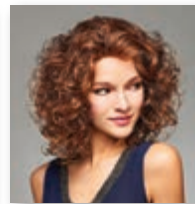
Olivia 34



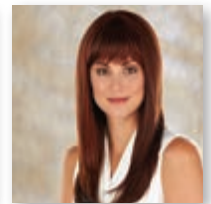
Page Band 56



Pamela 45



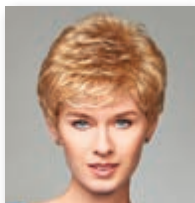
Paulina 5



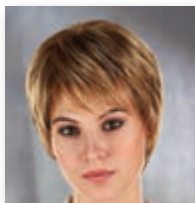
Perfection 50



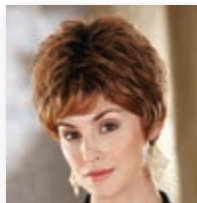
Rianna 7



Ruby 13



Sabrina 39



Sammi 33



Sassy 55



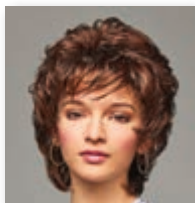
Savannah 14



Sensation 55



Shorty Hat 53



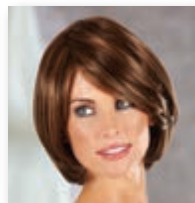
Sonya 18



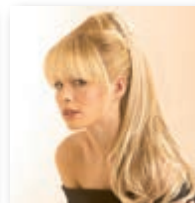
Sophia 32



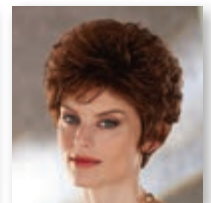
Sunny 54



Supra 48



Temptation 55



Teresa 32



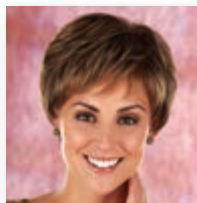
Tess 19



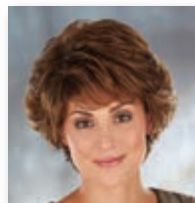
Tia 33



Toni 29



Trish 49



Tyler 44



Utopia 51



Vanity 10



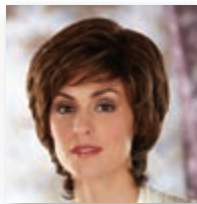
Visage 48



Vogue 34



Whirlwind 55



Yasmin 27



Henry Margu